

**UNITED STATES DISTRICT COURT  
WESTERN DISTRICT OF LOUISIANA  
MONROE DIVISION**

**PHILLIP CALLAIS, ET AL**

**CIVIL DOCKET NO. 3:24-CV-00122  
DCJ-CES-RRS**

**VERSUS**

**THREE-JUDGE COURT**

**NANCY LANDRY, in her official  
capacity as Louisiana Secretary of  
State**

**INJUNCTION AND REASONS FOR JUDGMENT**

*Opinion of the Court by David C. Joseph and Robert R. Summerhays, District Judges.*

The present case involves a challenge to the current congressional redistricting map enacted in Louisiana on the grounds that one of the congressional districts created by the Louisiana State Legislature — District 6 — is an impermissible racial gerrymander in violation of the Equal Protection Clause of the Fourteenth Amendment. This challenge reflects the tension between Section 2 of the Voting Rights Act and the Equal Protection Clause. The Voting Rights Act protects minority voters against dilution resulting from redistricting maps that “crack” or “pack” a large and “geographically compact” minority population. On the other hand, the Equal Protection Clause applies strict scrutiny to redistricting that is grounded predominately on race.

The challenged Louisiana redistricting scheme originated in response to litigation brought under Section 2 of the Voting Rights Act in a separate suit filed in the United States District Court for the Middle District of Louisiana, challenging Louisiana’s prior redistricting scheme under Section 2 of the Voting Rights Act.

*Robinson, et al v. Ardoin*, No. 3:22-cv-211; consolidated with *Galmon et al v. Ardoin*, No. 3:22-cv-214 (M.D. La.) (“*Robinson Docket*”). There, the district court concluded that the *Robinson* plaintiffs were likely to succeed on the merits of their claim that Louisiana’s prior redistricting plan violated Section 2 of the Voting Rights Act. In response, the Legislature adopted the present redistricting map (created by Senate Bill 8) (“SB8”), which established a second majority–Black congressional district to resolve the *Robinson* litigation. The plaintiffs here then filed the present case challenging this new congressional map on the grounds that the second majority–Black district created by the Legislature violates the Equal Protection Clause.

This matter was tried before the three-judge panel from April 8-10, 2024. Having considered the testimony and evidence at trial, the arguments of counsel, and the applicable law, we conclude that District 6 of SB8 violates the Equal Protection Clause. Accordingly, the State is enjoined from using SB8 in any future elections. The Court’s Opinion below constitutes its findings of fact and conclusions of law. The Court sets a status conference with all parties to discuss the appropriate remedy.

## I. PROCEDURAL AND HISTORICAL BACKGROUND

### A. The *Hays* Litigation

“Those that fail to learn from history are doomed to repeat it.”  
- Winston Churchill

Following the 1990 census, the Louisiana State Legislature (the “Legislature”) enacted Act 42 of 1992, which created a new congressional voting map. Prior to the Act 42 map, Louisiana had seven congressional districts, one of which included a majority-Black voting population. Act 42 created a second majority-Black district.

The existing majority-Black district encircled New Orleans, and the other, new one, “[l]ike the fictional swordsman Zorro, when making his signature mark, ... slash[ed] a giant but somewhat shaky ‘Z’ across the state.” *Hays v. State of La.*, 839 F. Supp. 1188, 1199 (W.D. La. 1993), *vacated sub nom. Louisiana v. Hays*, 512 U.S. 1230, 114 S. Ct. 2731, 129 L.Ed.2d 853 (1994) (“*Hays I*”).

Several voters challenged the scheme. After a trial, a three-judge panel of the Western District of Louisiana concluded that Act 42’s plan violated the Equal Protection Clause of the Fourteenth Amendment of the United States Constitution, and accordingly enjoined the use of that plan in any future elections. *Id.* In 1993, while an appeal of the district court’s findings in *Hays I* was pending before the Supreme Court of the United States, the Legislature repealed Act 42 and passed Act 1, creating a new map. *Hays v. State of La.*, 862 F. Supp. 119, 125 (W.D. La. 1994), *aff’d sub nom. St. Cyr v. Hays*, 513 U.S. 1054, 115 S. Ct. 687, 130 L.Ed.2d 595 (1994), *and vacated sub nom. United States v. Hays*, 515 U.S. 737, 115 S. Ct. 2431, 132 L.Ed.2d 635 (1995) (“*Hays II*”).

The 1993 map, like the 1992 map, had two majority-African American districts. *Id.* One encircled New Orleans, while the other was long and narrow and slashed 250 miles in a southeasterly direction from Shreveport down to Baton Rouge. This district was described as resembling “an inkblot which has spread indiscriminately across the Louisiana map.” *Id.*



PE22 (Map from *Hays II*).

The Supreme Court vacated *Hays I* and remanded the case for further proceedings in light of the passage of Act 1. See *Louisiana v. Hays*, 512 U.S. 1230, 114 S. Ct. 2731, 129 L.Ed.2d 853 (1994). The panel of our colleagues making up that three-judge court determined that the Legislature had once again allowed race to be predominant in the map's creation and declared Act 1 unconstitutional. *Hays II* at 121. The case was again appealed to the Supreme Court. Without addressing the merits of the case, the Supreme Court determined that the plaintiffs lacked standing to challenge Act 1 as they did not reside in the challenged district. *United States v. Hays*, 515 U.S. 737, 115 S. Ct. 2431, 132 L.Ed.2d 635 (1995).

On remand, the three-judge panel permitted an amended complaint to address the standing issue. The court then reiterated its findings from *Hays II* that Act 1

constituted a racial gerrymander and was not narrowly tailored to further a compelling state interest. The court therefore found that Act 1 violated the Equal Protection Clause of the Fourteenth Amendment of the United States Constitution and ordered the state to implement a redistricting plan drawn by the court. *Hays v. Louisiana*, 936 F. Supp. 360 (W.D. La. 1996) (“*Hays III*”).

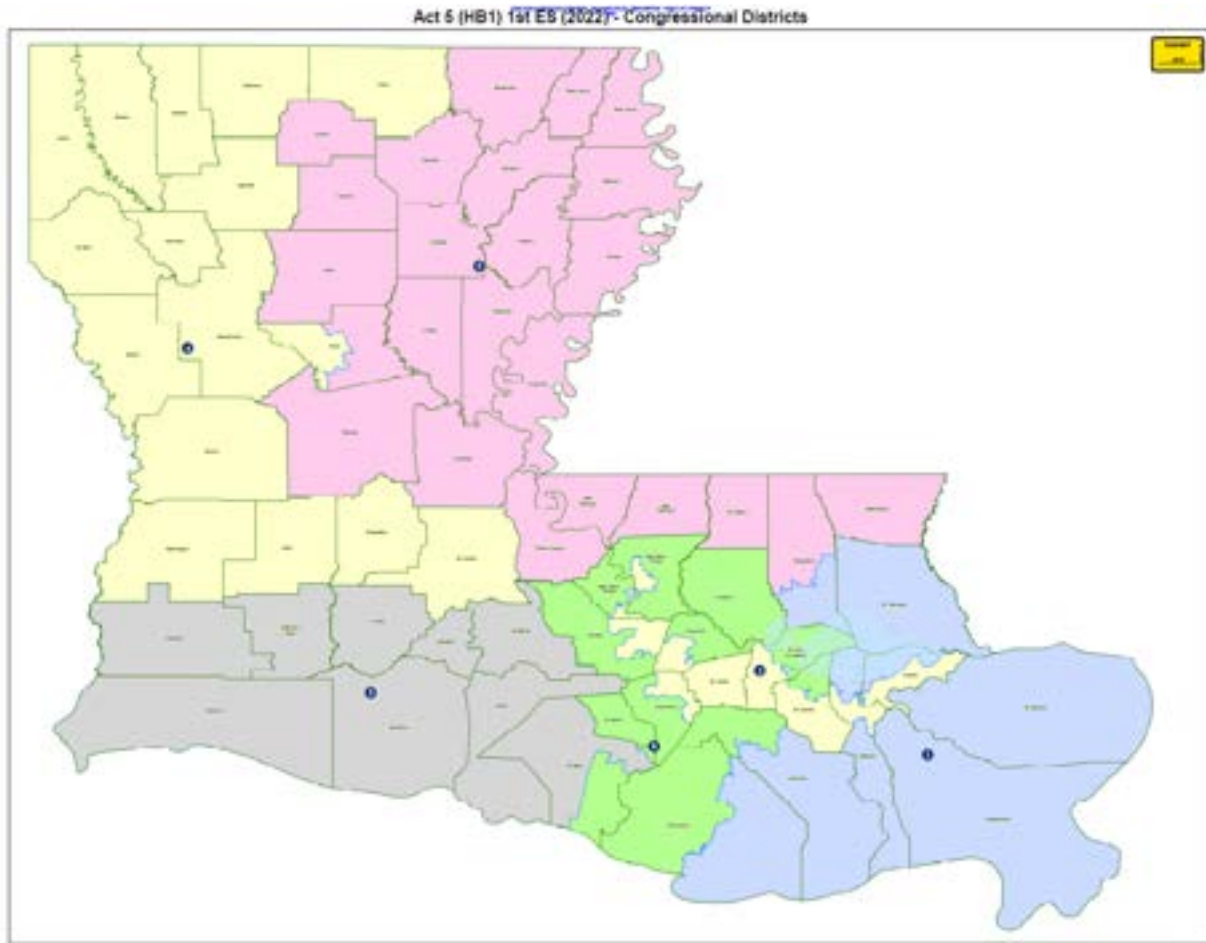
**B. 2020 Census and Events Leading up to the *Robinson* Litigation**

Based on the 2020 Census, Louisiana’s population stood at 4,657,757 with a voting-age population of 3,570,548. JE6; JE15. As a result, the state qualified for six congressional districts — one less district than it had during the *Hays* litigation, but the same number it was allotted after the 2010 Census. JE15. Prior to the start of the legislative session on redistricting, members of the Legislature traveled across the state conducting public hearings, called “roadshows,” to give the public the opportunity to voice their views on the redistricting process. *See* JE-3; *see also* Tr., Vol. III, 513:14–514:17. The roadshows were “designed to share information about redistricting and solicit public comment and testimony.” *Robinson v. Ardoin*, 605 F.Supp.3d 759, 767 (M.D. La. 2022), *cert. granted before judgment*, 142 S. Ct. 2892, 213 L.Ed.2d 1107 (2022), *and cert. dismissed as improvidently granted*, 143 S. Ct. 2654, 216 L.Ed.2d 1233 (2023), *and vacated and remanded*, 86 F.4th 574 (5th Cir. 2023) (“*Robinson* Injunction Ruling”).

The Louisiana Senate Governmental Affairs and House Governmental Affairs conducted ten hearings as part of the roadshow across the state. Tr., Vol. II, 476:18–25; Tr., Vol. III, 513:18–514:7. These hearings allowed citizens to testify on their redistricting preferences. *Id.* Senator Royce Duplessis, who served as Vice Chair of

the House and Governmental Affairs Committee at the time, attended the roadshows and testified that “the purpose of the road shows was to give the public the opportunity to share their thoughts and what they wanted to see in redistricting.” Tr., Vol. III, 514:8–17.

Louisiana ultimately enacted a new congressional map, created by House Bill 1 (“HB1”), on March 31, 2022. JE1. As with Louisiana’s prior congressional map, HB1 had one majority-Black district. Louisiana Governor John Bel Edwards vetoed HB1, but the Legislature overrode that veto. *Robinson Injunction Ruling at 767*.



2022 Enacted Map (JE16).

### C. The *Robinson* Litigation

On the same day that HB1 was enacted, a group of plaintiffs led by Press Robinson<sup>1</sup> (the “*Robinson* Plaintiffs”), and a second group of plaintiffs led by Edward Galmon, Sr.<sup>2</sup> (the “*Galmon* Plaintiffs”), filed suit against the Louisiana Secretary of State in the United States District Court for the Middle District of Louisiana. *Robinson* Injunction Ruling at 768. The Middle District consolidated the *Robinson* and *Galmon* suits and allowed intervention by the President of the Louisiana State Senate, the Speaker of the Louisiana House of Representatives, and the Louisiana Attorney General. *Id.* at 768-69.

The *Robinson* and *Galmon* Plaintiffs alleged that the congressional map created by HB1 diluted the votes of Black Louisianians in violation of Section 2 of the Voting Rights Act of 1965, 52 U.S.C. § 10301. *Robinson* Injunction Ruling at 768. This dilution was purportedly accomplished through “‘packing’ large numbers of Black voters into a single majority-Black congressional district...and ‘cracking’ the remaining Black voters among the other five districts...to ensure they [would be] unable to participate equally in the electoral process.” *Id.* at 768. Both sets of plaintiffs sought a preliminary injunction that would prohibit the Secretary of State from using the HB1 map in the 2022 congressional elections, give the Legislature a deadline to enact a map that complied with the Voting Rights Act, and order the use

---

<sup>1</sup> Press Robinson, Edgar Cage, Dorothy Nairne, Edwin Rene Soule, Alice Washington, Clee Earnest Lowe, Davante Lewis, Martha Davis, Ambrose Sims, National Association for the Advancement of Colored People (“NAACP”) Louisiana State Conference, and Power Coalition for Equity and Justice.

<sup>2</sup> Edward Galmon, Sr., Ciara Hart, Norris Henderson, and Tramelle Howard.

of a map proposed by the plaintiffs in the event the Legislature failed to enact a compliant map. *Id.* at 769.

The Middle District held an evidentiary hearing in the *Robinson* matter, beginning May 9, 2022. *Robinson* Injunction Ruling at 769. On June 6, 2022, the court issued a preliminary injunction finding that the *Robinson* and *Galmon* Plaintiffs were likely to prevail on their Section 2 vote dilution claims. *Id.* at 851-52. The Middle District further determined that a new compliant voting map could be drawn without disrupting the 2022 election. *Id.* at 856.

Accordingly, the Middle District entered an order enjoining the Secretary of State from conducting elections using the HB1 map, ordered the Legislature to enact a new voting map that included a second majority-Black voting district by June 20, 2022, and stayed the state's nominating petition deadline until July 8, 2022. *Robinson* Injunction Ruling at 858. In the event the Legislature failed to enact a new map before the deadline, the Middle District set an evidentiary hearing for June 29, 2022, regarding which map should be used in its place. *Robinson* Docket, [Doc. 206].

On June 9, 2022, the Middle District denied a motion to stay the injunction pending appeal. *Robinson v. Ardoin*, No. CV 22-211-SDD-SDJ, 2022 WL 2092551 (M.D. La. June 9, 2022). While the United States Court of Appeals for the Fifth Circuit initially stayed the injunction review on the same day, *Robinson v. Ardoin*, No. 22-30333, 2022 WL 2092862 (5th Cir. June 9, 2022), it vacated the stay a few days later. *Robinson v. Ardoin*, 37 F.4th 208, 232 (5th Cir. 2022). On June 28, 2022, the Supreme Court of the United States again stayed the Middle District's injunction. *Ardoin v. Robinson*, 142 S. Ct. 2892, 213 L.Ed.2d 1107 (2022). On June 26, 2023,

after the Supreme Court issued its decision in *Alabama v Milligan*, 599 U.S. 1, 143 S. Ct. 1487, 216 L.Ed.2d 60 (2023), the court vacated the stay in *Robinson* as improvidently granted, allowing review of the matter to continue before the Fifth Circuit. *Ardoin v. Robinson*, 143 S. Ct. 2654, 216 L.Ed.2d 1233 (2023).

In response to the Supreme Court's action in vacating the stay, the Middle District reset the remedial evidentiary hearing to begin October 3, 2023. *Robinson* Docket, [Doc. 250]. The Louisiana Attorney General sought mandamus from the Fifth Circuit, which vacated the evidentiary hearing. *In re Landry*, 83 F.4th 300, 308 (5th Cir. 2023).

On November 10, 2023, the Fifth Circuit issued its decision on the Secretary of State's appeal of the Middle District's preliminary injunction. *Robinson v. Ardoin*, 86 F.4th 574 (5th Cir. 2023) ("*Robinson* Appeal Ruling"). Although noting that the *Robinson* Plaintiffs' arguments were "not without weaknesses," the Circuit Court found no clear error with the Middle District's factual findings, nor with its conclusion that the HB1 map likely violated Section 2, and held that the preliminary injunction was valid when it was issued. *Robinson* Appeal Ruling at 599. However, because the 2022 election had already occurred and because the Legislature had time to enact a new map without disrupting the 2024 election, the Fifth Circuit concluded that the district court's preliminary injunction was no longer necessary. *Id.* Accordingly, the Fifth Circuit vacated the injunction to give the Legislature the opportunity, if it desired, to enact a new redistricting plan before January 15, 2024. *Id.* at 601. The Fifth Circuit opinion did not provide any parameters or specific direction as to how the Legislature was to accomplish this task. *Id.* If no new re-districting plan was

enacted before January 15, 2024, the Fifth Circuit directed the district court, “to conduct a trial and any other necessary proceedings to decide the validity of the HB1 map, and, if necessary, to adopt a different districting plan for the 2024 elections.” *Id.*

The Middle District thereafter set a remedial evidentiary hearing for February 5, 2024. Prior to that date, and as detailed below, the Legislature enacted SB8, creating a new congressional districting map. Upon notice of SB8’s enactment, the Middle District cancelled the remedial hearing. *Robinson* Docket, [Doc. 343].

#### **D. Legislative Response**

Among the first actions of newly inaugurated Governor Jeff Landry was to call the 2024 First Extraordinary Session on Monday, January 8, 2024 (the “Special Session”). JE8. This call directed the Legislature to, among other things, “legislate relative to the redistricting of the Congressional districts of Louisiana.” *Id.* On the first day of the Special Session, Governor Landry addressed the joint chambers. After detailing his extensive efforts in *Robinson* to defend the congressional map enacted in 2022, he stated: “we have exhausted all legal remedies and we have labored with this issue for far too long.” JE35 at 11. “[N]ow, once and for all,” he continued, “I think it’s time that we put this to bed. Let us make the necessary adjustments to heed the instructions of the court. Take the pen out of the hand of a non-elected judge and place it in your hands. In the hands of the people. It’s really that simple. I would beg you, help me make this a reality in this special session, for this special purpose, on this special day.” *Id.*

The product of the Special Session was SB8, which was passed on January 22, 2024. JE10. The Court has reviewed the entire legislative record, including the January 15 Joint Session, the January 15 House and Governmental Affairs Committee hearing, the January 16 Senate and Governmental Affairs Committee hearing, the January 17 Senate floor debate, the January 17 House and Governmental Affairs Committee hearing, the January 18 House floor hearing, the January 18 House and Governmental Affairs Committee hearing, the January 19 House of Representatives floor debate, and the January 19 Senate floor debate. PE23-29. Numerous comments during the Special Session highlight the intent of the Legislature in passing SB8.

Senator Glen Womack, the Senate sponsor of SB8, stated at the legislative session that redistricting must occur because of the litigation occurring in the Middle District of Louisiana. PE41, at 18. Specifically because of that litigation, Senator Womack opined that “we had to draw two majority minority districts.” PE41, at 20. Later in the Special Session, Senator Womack, in addressing the odd shape of SB8’s District 6 (shown below), admitted that creating two majority-Black districts is “the reason why District 2 is drawn around the Orleans Parish and why District 6 includes the Black population of East Baton Rouge Parish and travels up I-49 corridor to include Black population in Shreveport.” PE41, at 26. Senator Womack also professed: “we all know why we’re here. We were ordered to draw a new black district, and that’s what I’ve done.” JE31, 121:21-22

Likewise, in the House of Representatives, Representative Beau Beaulieu was asked during his presentation of SB8 by Representative Beryl Amedee, “is this bill

intended to create another Black district?” and Representative Beaulieu responded, “yes, ma’am, and to comply with the judge’s order.” JE33, 9:3-8. . Representative Josh Carlson stated, even in his support of SB8, that “the overarching argument that I’ve heard from nearly everyone over the last four days has been race first” and that “race seems to be, at least based on the conversations, the driving force” behind the redistricting plan. *Id.* at 97:18-19, 21-24.

But, Representative Carlson acknowledged that racial integration made drawing a second majority-Black district difficult:

And so the reason why this is so difficult is because we are moving in the right direction. We don't have concentrated populations of – of certain minorities or populations of white folks in certain areas. It is spread out throughout the state. Compared to Alabama, Alabama has 17 counties that are minority-majority, and they’re all contiguous. Louisiana has seven parishes that are minority-majority and only three are contiguous. That’s why this process is so difficult, but here we are without any other options to move forward.

*Id.* at 98:2-12.

Representative Rodney Lyons, Vice Chairman of the House and Governmental Affairs Committee, stated that the “mission that we have here is that we have to create two majority-Black districts.” JE31, 75:24-76:1. Senator Jay Morris also remarked that “[i]t looks to me we primarily considered race.” JE34, 7:2-3. Senator Gary Carter went on to express his support for SB8 and read a statement from Congressman Troy Carter on the Senate floor:

My dear friends and colleagues, as I said on the steps of the capital, I will work with anyone who wants to create two majority-minority districts. I am not married to any one map. I have worked tirelessly to help create two majority-minority districts that perform. That’s how I know that there may be better ways to create – to craft both of these districts. There are multiple maps that haven’t been reviewed at all.

However, the Womack map creates two majority-minority districts, and therefore I am supportive of it. And I urge my former colleagues and friends to vote for it while trying to make both districts stronger with appropriate amendment. We do not want to jeopardize this rare opportunity to give African American voters the equal representation they rightly deserve.

JE30, 16:10-25.

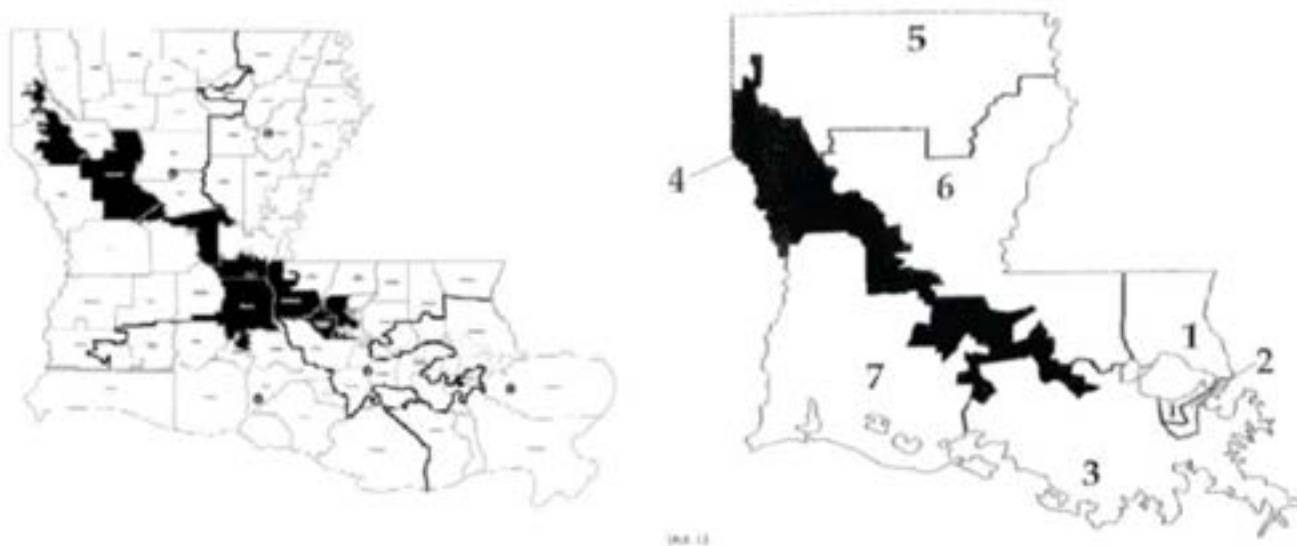
Louisiana Attorney General Murrill also gave the legislators advice during the Special Session. She told them that the 2022 enacted map, HB1, was a defensible and lawful map. JE28, 36:24-37:1. She stated, “I am defending that map, and so you won’t hear me say that I believe that that map violated the redistricting criteria,” *Id.* at 42:23, and “I am defending it now.” *Id.* at 46:3-4. She further declared “I am defending what I believe to have been a defensible map.” *Id.* at 53:2. She also informed legislators that the *Robinson* litigation had not led to a fair or reliable result. *Id.* at 61:20-62:12, 62:24-63:3, 63:6-17.

SB8 was the only congressional map to advance out of committee and through the legislative process. The map was passed on Friday, January 19, 2024, and signed by the Governor as Act 2 on January 22, 2024. JE10. SB8’s second majority-minority district, District 6, stretches some 250 miles from Shreveport in the northwest corner of the state to Baton Rouge in southeast Louisiana, slicing through metropolitan areas to scoop up pockets of predominantly Black populations from Shreveport, Alexandria, Lafayette, and Baton Rouge. The figure below, which shows the map enacted by SB8, demonstrates the highly irregular shape of Congressional District 6.



PE14.

When converted to a black and white map and placed next to the *Hays II* map, the similarities of the two maps become obvious.



Black and White Version of PE14 (left) and PE22 (right).

### **E. The Parties and Their Claims**

The Plaintiffs, Philip Callais, Lloyd Price, Bruce Odell, Elizabeth Ersoff, Albert Caissie, Daniel Weir, Joyce LaCour, Candy Carroll Peavy, Tanya Whitney, Mike Johnson, Grover Joseph Rees, and Rolfe McCollister, challenge SB8. [Doc. 156]. Plaintiff Philip Callais is a registered voter of District 6. *Id.* Plaintiff Albert Caissie, Jr. is a registered voter of District 5. *Id.* Plaintiff Elizabeth Ersoff is a registered voter of District 6. *Id.* Plaintiff Grover Joseph Rees is a registered voter of District 6. *Id.* Plaintiff Lloyd Price is a registered voter of District 6. *Id.* Plaintiff Rolfe McCollister is a registered voter of District 5. *Id.* Plaintiff Candy Carroll Peavy is a registered voter of District 4. *Id.* Plaintiff Mike Johnson is a registered voter of District 4. *Id.* Plaintiff Bruce Odell is a registered voter of District 3. *Id.* Plaintiff Joyce LaCour is a registered voter of District 2. *Id.* Plaintiff Tanya Whitney is a registered voter of in District 1. *Id.* Plaintiff Danny Weir, Jr., is a registered voter of District 1. *Id.* Each of the Plaintiffs is described as a “non-Black voter.” [Doc. 1].

The State Defendants are Secretary of State Nancy Landry, in her official capacity, and the State of Louisiana, represented by Attorney General Elizabeth Murrill. [Doc. 156]. The State intervened as a defendant on February 26, 2024. [Doc. 79].

Press Robinson, Edgar Cage, Dorothy Nairne, Edwin Rene Soule, Alice Washington, Clee Earnest Lowe, Davante Lewis, Martha Davis, Ambrose Sims, National Association for the Advancement of Colored People Louisiana State Conference, and Power Coalition for Equity and Justice (collectively “*Robinson* Intervenors”) are African American Louisiana voters and civil rights organizations.

[Doc. 156]. They were Plaintiffs in *Robinson, et al v. Landry*, No. 3:22-cv-0211-SDD-SDJ (M.D. La.) and intervened here as defendants to defend SB8. [Doc. 156]. They intervened permissively in the remedial phase of this litigation on February 26, 2024, and permissively in the liability phase on March 15, 2024. [Docs. 79, 114]. Davante Lewis lives in District 6. *Tr.*, Vol. III, 567:23–568:1. The voting districts for the other individual *Robinson* Intervenors was not established in the record.

Plaintiffs assert that: (1) the State has violated the Equal Protection Clause of the Fourteenth Amendment by enacting a racially gerrymandered district; and (2) the State has violated the Fourteenth and Fifteenth Amendments by intentionally discriminating against voters and abridging their votes based on racial classifications across the State of Louisiana. [Doc. 1, ¶ 5]. The Plaintiffs request that the Court issue a declaratory judgment that SB8 is unconstitutional under the Fourteenth and Fifteenth Amendments, issue an injunction barring the State of Louisiana from using SB8’s map of congressional districts for any election, and institute a congressional districting map that remedies these violations. *Id.*, p. 31.

#### **F. The Three-Judge Panel and Trial**

On February 2, 2024, Priscilla Richman, the Chief Judge of the Fifth Circuit Court of Appeals, issued an Order Constituting Three-Judge Court. [Doc. 5]. Chief Judge Richman designated Judge Carl E. Stewart, of the Fifth Circuit Court of Appeals, Judge Robert R. Summerhays, of the Western District of Louisiana, and Judge David C. Joseph, of the Western District of Louisiana, to serve on the three-judge district court convened under 28 U.S.C. § 2284. *Id.* On February 17, 2024, Plaintiffs filed a Motion for Preliminary Injunction. [Doc. 17]. On February 21, 2024,

the Court issued a Scheduling Order setting the hearing on the Preliminary Injunction—consolidated with trial on the merits—to commence on April 8, 2024, in Shreveport, Louisiana. [Doc. 63]. The hearing commenced on April 8, 2024, and ended on April 10, 2024. Collectively, the parties introduced thirteen (13) witnesses and one hundred ten (110) exhibits.

## II. EVIDENTIARY RECORD

### A. Fact Witnesses

#### 1. Legislators

##### a. Alan Seabaugh

Alan Thomas Seabaugh is a Louisiana State Senator for District 31, located in northwest Louisiana. Senator Seabaugh took office in January 2024. He had previously served as a Louisiana State Representative for thirteen years. Tr. Vol. I, 42:16-17. Senator Seabaugh testified that the only reason the Legislature was attempting to pass a redistricting plan during the Special Session was the litigation pending in the Middle District of Louisiana, and specifically “Judge Dick saying that she – if we didn’t draw the second minority district, she was going to. I think that’s the only reason we were there.” *Id.* at 47:22-48:1. When asked if having a second majority-Black district was the one thing that could not be compromised in the plans being considered, Senator Seabaugh testified “that’s why we were there.” *Id.* at 50:2. Senator Seabaugh ultimately voted no to SB8 and indicated that he believed the 2022 map (HB1) was a good map. *Id.* at 52:19-22. On cross examination, Senator Seabaugh acknowledged that, in determining how to draw the new districts,

protecting the districts of Mike Johnson and Stephen Scalise – two of Louisiana’s representatives in the United States House of Representatives, serving as Speaker and Majority Leader, respectively – were important considerations. *Id.* at 60:8-20.

**b. Thomas Pressly**

Thomas Pressly is a Louisiana State Senator for District 38, which is located in the northwest corner of Louisiana. Senator Pressly took office in January 2024. He had previously served as a Louisiana State Representative for four years. *Tr.*, Vol. I, 66:1-6. Senator Pressly testified that during the Special Session, “the racial component in making sure that we had two performing African American districts was the fundamental tenet that we were looking at. Everything else was secondary to that discussion.” *Id.* at 69:16-19. Senator Pressly acknowledged that political considerations were also factored into the ultimate redistricting plan, stating:

[t]he conversation was that we would – that we were being told we had to draw a second majority-minority seat. And the question then was, okay, who – how do we do this in a way to ensure that we’re not getting rid of the Speaker of the House, the Majority Leader, and Senator Womack spoke on the floor about wanting to protect Julia Letlow as well.

*Id.* at 72:1-7. Senator Pressly testified that he did not believe that his district in the northwest corner of Louisiana shares a community of interest with either Lafayette or Baton Rouge, both located in the southern half of Louisiana, based on either natural disaster concerns or educational needs. *Id.* at 73:1-23. Senator Pressly spoke against SB8 during the Special Session and testified that he believed the 2022 map should be retained. *Id.* at 77:6-8.

**c. Mandie Landry**

Mandie Landry is a Louisiana State Representative for House District 91, located in New Orleans. She took office in January 2020. Tr., Vol. II, 366:2-3. Representative Landry testified that the Special Session was convened because the Republicans were afraid that if they did not draw a map which satisfied the court, then the court would draw a map that would not be as politically advantageous for them. *Id.* at 368:8-10. Representative Landry indicated that she understood Governor Jeff Landry to favor the map created by SB8, in part because he believed the map would resolve the *Robinson* litigation in the Middle District, and in part because the new map would cause Congressman Garrett Graves – a Republican incumbent with whom Landry was believed to have a contentious relationship – to lose his seat. *Id.* at 369:10-15.

**d. Royce Duplessis**

Royce Duplessis is a Louisiana State Senator representing Senate District 5, which is located in the New Orleans area. He took office in December 2022 and previously served as a Louisiana State Representative for over four years. Tr. Vol. III, 512:21-24. Senator Duplessis testified that his understanding of the reason for the Special Session was “to put an end to the litigation and adopt a map that was compliant with the Judge’s order.” *Id.* at 519:22-23. Though he was not a member of the Senate’s redistricting committee, Senator Duplessis co-sponsored a separate bill during the Special Session, namely SB4, which also created two majority-Black districts. *Id.* at 521:1-2. SB4 was ultimately voted down in committee in favor of SB8. *Id.* at 523:14-23. Senator Duplessis testified that he believed SB8 passed

because Governor Landry supported SB8 for political reasons. *Id.* at 525:1-7. Senator Duplessis voted in favor of SB8 because he believed it complied with the Voting Rights Act, it met the criteria ordered by the court, and was a fair map which would satisfy the people of Louisiana. *Id.* at 527:23 -528:9. Senator Duplessis testified that he was very proud of the passage of SB8 because:

It was always very clear that a map with two majority black districts was the right thing. It wasn't the only thing, but it was a major component to why we were sent there to redraw a map.

*Id.* at 530:15-19.

**2. Community Members**

**a. Cedric Bradford Glover**

Cedric Bradford Glover is a resident of Shreveport, Louisiana, who previously served a total of five terms in the Louisiana House of Representatives, and two terms as mayor of Shreveport. *Tr.*, Vol. II, 454:12-20. Mayor Glover testified that he believes SB8's District 6 reflects common communities of interest, specifically the I-49 corridor, the communities along the Red River, higher education campuses, healthcare systems, and areas of economic development. *Id.* at 457:17-458:21.

**b. Pastor Steven Harris, Sr.**

Steven Harris, Sr. resides in Natchitoches, Louisiana, where he serves as a full-time pastor and a member of the Natchitoches Parish School Board. *Tr.*, Vol. II, 463:5-6. Pastor Harris' ministerial duties require him to travel to Alexandria, Shreveport, Lafayette, Baton Rouge, and places in between. *Id.* at 463:18-20. Pastor Harris, who lives and works in District 6, testified that there are communities of interest among the areas in which he regularly travels, specifically churches and

educational institutions. *Id.* at 466:24 – 467:16. Pastor Harris testified that he believes Baton Rouge has more in common with Alexandria and Shreveport than with New Orleans, due to the different culture, foods, and music. *Id.* at 467:20-468:14.

**c. Ashley Kennedy Shelton**

Ashley Kennedy Shelton resides in Baton Rouge and founded and runs the Power Coalition for Equity and Justice (the “Coalition”), one of the *Robinson* Intervenors. Tr., Vol. II, p. 474:8-11. The Coalition is a 501(c)(3) civic engagement organization which seeks to create “pathways to power for historically disenfranchised communities.” *Id.* at 474:24-475:1. She testified that the Coalition has been involved with the redistricting process since the 2020 census by educating the community about the redistricting process, as well as encouraging community involvement in that process. *Id.* at 475:21. Ms. Shelton initially supported SB4, another map offered in the Special Session which also contained two majority-minority districts, but that map did not move out of committee. *Id.* at 482:1-2. Ms. Shelton, along with the Coalition, went on to support SB8 because it:

centered communities that have never been centered in any of the current congressional districts that they are within. And so when you look at the district that’s created in SB8, the communities across that district are living in poverty, have poor health outcomes, lack of access to economic opportunity, similar hospitals, similar size airports. Like there is this – there is this opportunity to really center these communities in a way that they have not had the attention in the current districts that they exist within.

*Id.* at 483:6-15.

**d. Davante Lewis**

Davante Lewis, one of the *Robinson* Intervenors, is a resident of Baton Rouge, Louisiana, and currently serves as a commissioner for the Louisiana Public Service Commission and chief strategy officer of Invest in Louisiana. Tr., Vol. III, 542:23-25. Commissioner Lewis testified that he has been involved in politics since he was a teenager and has taken part in the redistricting process on numerous occasions as a lobbyist. *Id.* at 548:3-15. During the Special Session, Commissioner Lewis initially supported SB4, another bill which also included two majority-minority districts but failed to pass out of committee. *Id.* at 553:15-22. Commissioner Lewis, who is now a resident in District 6, testified that he was happy with the passage of SB8 because “it accomplishes the goals that I wanted to see which was complying with the rule of law as well as creating a second [B]lack-majority district.” *Id.* at 576:16-18. Commissioner Lewis believes that he shares common interests with voters living in other areas within District 6, namely economies, civic organizations, religious organizations, educational systems, and agriculture. *Id.* at 578:14-25. On cross-examination, Commissioner Lewis admitted that District 6 intersects four of the five public service commission districts in the state.

**B. Expert Witnesses**

**a. Dr. Stephen Voss**

The Court accepted Plaintiffs’ witness Dr. Stephen Voss as an expert in the fields of: (i) racial gerrymandering; (ii) compactness; and (iii) simulations.<sup>3</sup> Tr., Vol.

---

<sup>3</sup> Plaintiffs retained Dr. Stephen Voss to answer three questions: (1) whether SB8 represents an impermissible racial gerrymander, where race was the predominant factor in

I, 92:13-25; 93:1-19; 111:6-7; 123:7-9. Dr. Voss was born in Louisiana, lived most of his life in Jefferson Parish, and earned his Ph.D. in political science at Harvard University, where his field of focus was quantitative analysis of political methodology. *Id.* at 85:12-13; 87:8-21.

Dr. Voss began his testimony by comparing the districts created by SB8 to past enacted congressional maps in Louisiana and other proposals that the Legislature considered during the Special Session. Tr., Vol. I, 97:19-98:2. Dr. Voss described District 6 as a district:

that stretches, or I guess the term is “slashes,” across the state of Louisiana to target four metropolitan areas, which is the majority of the larger cities in the state. It then scoops out from each of those predominant – the majority black and predominantly black precincts from each of those cities.

*Id.* at 93:25; 94:1-5. Dr. Voss explained that the borders of District 6, which include portions of the distant parishes of Lafayette and East Baton Rouge, track along Black communities, including precincts with larger Black population percentages while avoiding communities with large numbers of white voters. *Id.* at 94:18-95:10. Dr. Voss reiterated that the boundaries of District 6 were drawn specifically to contain heavily Black-populated portions of cities while leaving more white-populated areas in the neighboring districts. *Id.* at 96:7-16; PE3; PE4. Dr. Voss also testified that, compared to other maps proposed during the Special Session and other past congressional maps, SB8 split a total of 18 of Louisiana’s 64 parishes, Tr., Vol. I,

---

the drawing of district lines; (2) whether SB8 sacrificed traditional redistricting criteria in order to create two majority-minority districts; and (3) whether the Black population in Louisiana is sufficiently large and compact to support two majority-minority districts that conform to traditional redistricting criteria. Tr., Vol. I, 91:3-25 (Voss).

97:19-99:11, and, at 62.9 percent of Louisiana’s population, had the highest percentage of individuals affected by parish splits. *Id.* 98:3-99:11; PE6.

Dr. Voss also studied the compactness of SB8 under three generally accepted metrics: (i) Reock Score; (ii) Polsby-Popper score; and (iii) Know It When You See It (“KIWYSI”).<sup>4</sup> *Tr.*, Vol. I, 100:22-103:5. Dr. Voss found that across all three measures of compactness, SB8 performed worse than either HB1 (the map that was enacted in 2022) or the map that HB1 replaced from the previous decade. *Id.* at 104:25-105:4; PE7. Thus, SB8 did not produce compact maps when judged in comparison to other real-life congressional maps of Louisiana. *Tr.*, Vol. I, 107:16-21. Dr. Voss also found that SB8’s majority-Black districts were especially non-compact compared to other plans that also included two majority-minority districts. *Id.* at 106:17-24. According to Dr. Voss, SB8’s District 6 scored worse on the Polsby-Popper test than the second majority-Black districts in other proposed plans that created a second majority-Black district. *Id.* at 106:17-24.

Dr. Voss further testified that SB8’s and District 6’s uniquely poor compactness was not necessary if the goal was to accomplish purely political goals. “If you’re not trying to draw a second black majority district, it is very easy to protect Representative Julia Letlow. Even if you are, it’s not super difficult to protect

---

<sup>4</sup> According to Dr. Voss, a district’s “Reock score” quantifies its compactness by measuring how close the district is to being a circle. *Tr.*, Vol. 1, 100:23-6. A district’s “Polsby-Popper” score is intended to take into account a district’s jagged edges and “tendrils.” *Id.*, 101:25-102:19. Finally, the “Know It When You See It” method uses a metric derived by panels of judges and lawyers and a representative sample of people looking at the shape of a district and giving their quantification of compactness. *Id.*, 102:20-104:2. The KIWYSI method originated from individuals’ subjective judgments, but the metric itself is standardized and uses specific software to compute a numerical figure representing compactness. *Id.*, 103:15-104:2.

Representative Julia Letlow,” he testified. Tr., Vol. I, 108:17-21. Additionally, according to Dr. Voss, the Legislature did not need to enact a map with two majority-minority districts in order to protect Representative Letlow’s congressional seat: “[Representative Letlow] is in what historically is called the Macon Ridge...[a]nd given where she is located, it is not hard to get her into a heavily Republican, heavily white district.” *Id.* at 111:15-23. Dr. Voss testified similarly with respect to Representative Garrett Graves, concluding that the Legislature did not need to enact a second majority-minority district in order to put Representative Garrett Graves in a majority-Black district. *Id.* at 112:2-16. Thus, Dr. Voss concluded that neither the goal of protecting Representative Letlow’s district, nor the goal of targeting Representative Graves, would have been difficult to accomplish while still retaining compact districts. *Id.* at 110:15-22.

Dr. Voss testified extensively about simulations, explaining that he used the Redist simulation package (“Redist”) to analyze the statistical probability of the Legislature creating SB8 without race predominating its action.<sup>5</sup> *Id.* at 113:14-115:6. Using Redist, Dr. Voss compared “lab-grown” simulations of possible maps to SB8 in order to analyze the decisions the Legislature made during the redistricting process, *Id.* at 114:2-23, so that he could judge whether the parameters or constraints under which he created the simulations could explain the deviations evident in SB8. *Id.* at 118:15-23. Dr. Voss testified that he performed tens of thousands of both “race-

---

<sup>5</sup> According to Dr. Voss, Redist uses Sequential Monte Carlo (“SMC”) simulation in order to generate a representative sample of districts that could have been drawn under certain parameters. *Id.*, 113:8-114:10.

conscious” and “race-neutral” simulations, and that none of these simulations randomly produced a map with two Democratic districts. *Id.* at 138:9-14. On that basis, Dr. Voss opined that the non-compact features of SB8 are predominantly explained by racial considerations. *Id.* at 139:17-23.

Concluding that District 6 performs worse on the Polsby-Popper score than the second majority-Black district in the other plans; worse on the Reock score than the other plans that created a second majority-Black district, with a very low score; and worse on the KIWYSI method than the other plans and the majority-Black districts they proposed, *Id.* at 106:18-24, Dr. Voss ultimately opined that SB8 represents an impermissible racial gerrymander. *Id.* at 92:23-24.

**b. Dr. Cory McCartan**

Dr. Cory McCartan was proffered by the *Robinson* Intervenors in rebuttal to Dr. Voss and was qualified by the Court as an expert in the fields of redistricting and the use of simulations. *Tr.*, Vol. I, 187:5-14. Though Dr. McCartan criticized Dr. Voss for a number of his methodologies, the Court notes that Dr. McCartan conducted no tests or simulations of his own, *Id.* at 215:18-21, and his testimony was often undercut by his own previous analysis.

First, Dr. McCartan criticized Dr. Voss’s simulations on grounds that Dr. Voss did not incorporate the relevant redistricting criteria used by actual mapmakers. *Id.* at 198:10-24. Dr. McCartan also questioned the efficacy of simulations in detecting racial gerrymandering. *Id.* at 196:13-25; 197:1-12. Yet Dr. McCartan had previously led the Algorithm Assisted Redistricting Methodology (“ALARM”) Project team, which traversed the country simulating multiple districts in multiple states,

including Louisiana, and authored a paper which declared that simulations are well-suited to assess what types of racial outcomes could have happened under alternative plans in a given state. *Id.* at 227:9-21. Dr. McCartan also testified that he himself used the ALARM project to detect partisan, or political gerrymandering – ultimately finding that Louisiana had only one plausible district favoring the Democratic party. *Id.* at 216:23-25. And on cross-examination, Dr. Voss confirmed that Professor Kosuke Imai, who helped develop the Redist software, applied these same simulation techniques in the racial gerrymandering context. *Id.* at 150:18-151:1. On this point, therefore, the Court finds Dr. McCartan’s testimony unpersuasive.

Dr. McCartan also criticized Dr. Voss for not imposing a constraint in his simulations for natural or geographic boundaries. *Id.* at 200:1-6. Yet Dr. McCartan acknowledged that in his work with ALARM to generate Louisiana congressional map simulations, his team did not impose any kind of requirement for natural or geographic boundaries. *Id.* at 230:24-231:1. Dr. McCartan also criticized Dr. Voss for not adding incumbent protection as a constraint in the simulations, but when pressed, could not testify that this extra constraint would trigger the creation of a second majority-minority district. *Id.* at 238:11-16 (McCartan).

Similarly, Dr. McCartan could not give a convincing reason why it was appropriate for his own team to use a compactness constraint of 1.0, while testifying that this same criterion made Dr. Voss’s simulations unrepresentative. *Id.* at 231:5-16. Dr. Voss, on the other hand, explained why adjustments to the compactness criterion made the simulation results less reliable. *Id.* at 162:22-24, 163:21-165:19. Finally, Dr. McCartan confirmed that both his simulations on Louisiana

congressional maps and Dr. Voss's simulations generated plans that were more compact than the enacted version of SB8, which was far worse than the Polsby-Popper compactness scores of both Dr. McCartan's and Dr. Voss's simulations. *Id.* at 233:20-24 (McCartan). Dr. McCartan also acknowledged that his own partisan gerrymandering simulations yielded no more than 10 out of 5,000 maps with a second Democratic seat. *Id.* at 235:4-236:12.

In evaluating the testimony of Dr. Voss and Dr. McCartan, the Court finds Dr. Voss's testimony to be credible circumstantial evidence that race was the predominant factor in crafting SB8. Though Dr. McCartan provided some insight into the uses of simulations in detecting the presence of racial gerrymandering, his testimony indicated that his own team had performed simulations under conditions not unlike Dr. Voss's, and with conclusions that supported Dr. Voss. Dr. McCartan's other criticisms of Dr. Voss were either not well-founded or rebutted.

**c. Michael Hefner**

Plaintiffs proffered Michael Hefner as an expert demographer, and he was qualified by the Court as such. *Tr.*, Vol. II, 270:23-15; 271:1-5. Mr. Hefner is from Louisiana and has lived his whole life in various parts of the state. *Id.* at 258:3-6; [Doc. 182-8]. Having worked in the field of demography for 34 years, most of Mr. Hefner's work consists of creating redistricting plans for governmental entities, including municipalities and school boards, throughout the State of Louisiana after decennial censuses; conducting precinct management work for Louisiana parish governments; working on school desegregation cases in Louisiana; and conducting site-location analyses in Louisiana. *Tr.*, Vol. II, 257:9-22; Doc. 182-8. Mr. Hefner

testified that he came to the following conclusions during his analysis for this case: (1) given the geographic distribution and concentration of the Black population in Louisiana, it is impossible to create a second majority-minority district and still adhere to traditional redistricting criteria, Tr., Vol. II, 271:11-22, 282:21-283:6; and (2) race predominated in the drafting of SB8. *Id.* at 271:23; 272:1-14.

Mr. Hefner explained that the Black population in Louisiana is highly dispersed across the State and is concentrated in specific urban areas, including New Orleans, Baton Rouge, Alexandria, Lafayette, and Shreveport.<sup>6</sup> Tr., Vol. II, 281:7-15; 283:19-285:1; 339:20-340:4 (Hefner); *see also* Mr. Hefner's Heat Map, [Docs. 182-9, 182-10]. Using a heat map he created based on data representing the Black voting age population ("BVAP") across the State from the 2020 census, Mr. Hefner testified that outside the New Orleans and East Baton Rouge areas, the Black population is highly dispersed across the state. Tr., Vol. II, 281:4-15. Mr. Hefner opined that, given this dispersion, it is impossible to draw a second majority-minority congressional district without violating traditional redistricting criteria. *Id.* at 282:22-283:6.

Focusing on SB8, Mr. Hefner testified that SB8 is drawn to trace the areas of the state with a high BVAP to create a second majority-minority district, Tr., Vol. II, 283:15-285:1, echoing the testimony of Dr. Voss. Specifically, Mr. Hefner stated that District 6's borders include the concentrated Black populations in East Baton Rouge, Alexandria, Opelousas, Natchitoches, Mansfield, Stonewall, and up to Shreveport, *Id.*

---

<sup>6</sup> According to Mr. Hefner, the highest concentration of African American voters is in New Orleans; the second highest concentration is in East Baton Rouge; and the third highest concentration is in Shreveport. Tr., Vol. II, 281:4-15.

at 283:15-285:1, but carved concentrated precincts out of the remainder of the parishes to avoid picking up too much population of non-Black voters. *Id.* at 283:15-285:1. Taking Lafayette Parish as an example, Mr. Hefner testified that District 6 includes the northeast part of the parish, where voting precincts contain a majority of Black voters, while excluding the remainder of the parish, in which the precincts are not inhabited by predominantly Black voters. *Id.* at 283:22-284:4. Likewise, in Rapides Parish, District 6 splits Rapides Parish to include only the precincts in which there is a high concentration of Black voters, for the purpose of including the overall BVAP in the district. *Id.* at 284:4-8.

Mr. Hefner also testified that SB8's compactness score is extremely small. In fact, it is so low on the Polsby-Popper and Reock metrics that it is almost not compact at all.<sup>7</sup> *Id.* at 302:21-303:2; PE21. Explaining that District 6 is extremely long and extremely strung out, Tr., Vol. II, 303:18-20, Mr. Hefner testified that SB8 scored lower than HB1 on both the Polsby-Popper and Reock tests. *Id.* at 302:16-303:25; PE21. Mr. Hefner testified that District 6 is not reasonably compact, Tr., Vol. II, 304:11-14; its shape is awkward and bizarre, *Id.* at 304:23-305:6; it is extremely narrow at points, *Id.* at 305:18-306:2; its contiguity is tenuous, *Id.* at 293:23-24; and it splits many parishes and municipalities, including four of the largest parishes in the State (Caddo, Rapides, Lafayette, and East Baton Rouge), each of which are communities of interest. *Id.* at 295:7-8. Finally, Mr. Hefner testified that the Plaintiffs' redistricting plan, introduced as Illustrative Plan 1, was a reasonable plan

---

<sup>7</sup> The Polsby-Popper scale goes from 0 (no compactness) to 1 (total compactness). Mr. Hefner testified that District 6 had a Polsby-Popper score of 0.05. *Id.*, 303:13-20.

that can be drawn in a race-neutral manner; adheres to the use of traditional redistricting principles; preserves more communities of interest; provides more compact election districts; preserves the core election districts; and balances the population within each district. *Id.* at 272:17-25; 273:1-2.

**a. Anthony Fairfax**

Mr. Anthony Fairfax testified on behalf of the *Robinson* Intervenors to rebut the testimony of Mr. Hefner, and was qualified by the Court as an expert in redistricting and demography. Tr., Vol. II, 379:6-15. Contradicting Mr. Hefner, Mr. Fairfax testified that traditional redistricting principles could be used to create maps with a second majority-Black district. *Id.* at 381-383:24. But on rebuttal, Mr. Fairfax admitted that the map he used did not account for where people lived within parishes, and his map therefore failed to take account of where Black voters are located in each parish. *Id.* at 407:4-125; 408:1-12. Therefore, on the issue of parish splitting, Mr. Fairfax's testimony was unpersuasive. Rather, as Mr. Hefner testified, Fairfax's analysis fails to show the Court whether District 6 specifically targeted those pockets of high populations of Black voters. *Id.* at 292:13-293:3. Tellingly, in discussing preservation of communities of interests, parishes, and municipalities, Mr. Fairfax agreed with Mr. Hefner that SB8 split more parishes and municipalities than HB1, *Id.* at 385:14-18; 389:5-9, and that SB8 split more parishes and municipalities than the previously enacted plan. *Id.* at 385:11-15; 389:2-9.

### III. APPLICABLE LAW

To obtain permanent injunctive relief, the plaintiffs must establish by a preponderance of the evidence: “(1) actual success on the merits; (2) that it is likely to suffer irreparable harm in the absence of injunctive relief; (3) that the balance of equities tip in that party’s favor; and (4) that an injunction is in the public interest.”<sup>8</sup> *Crown Castle Fiber, L.L.C. v. City of Pasadena, Texas*, 76 F.4th 425, 441 (5th Cir. 2023), *cert. denied*, 144 S. Ct. 820 (2024); *see also Winter v. Nat. Res. Def. Council, Inc.*, 555 U.S. 7, 20, 32, 129 S. Ct. 365, 172 L.Ed.2d 249 (2008).

The Equal Protection Clause of the Fourteenth Amendment provides that: “[N]o state shall ... deny to any person within its jurisdiction the equal protection of the laws.” U.S. CONST. AMEND. XIV, § 1. The intent of the provision is “to prevent the States from purposefully discriminating between individuals on the basis of race.” *Shaw v. Reno*, 509 U.S. 630, 642, 113 S. Ct. 2816, 2824, 125 L.Ed.2d 511 (1993) (“*Shaw I*”). As applied to redistricting, the Equal Protection Clause bars “a State, without sufficient justification, from ‘separat[ing] its citizens into different voting districts on the basis of race.’” *Bethune–Hill v. Virginia State Bd. of Elections*, 580 U.S. 178, 187, 137 S. Ct. 788, 797, 197 L.Ed.2d 85 (2017) (citing *Miller v. Johnson*, 515 U.S. 900, 911, 115 S. Ct. 2475, 132 L.Ed.2d 762 (1995)). Thus, the Equal Protection Clause prohibits the creation and implementation of districting plans that include racial gerrymanders, with few exceptions. “A racial gerrymander [is] the

---

<sup>8</sup> The Court consolidated the preliminary injunction hearing with the full trial on the merits. *See* [Doc. 63].

deliberate and arbitrary distortion of district boundaries ... for [racial] purposes.” *Shaw I*, 509 U.S. at 640 (citing *Davis v. Bandemer*, 478 U.S. 109, 164, 106 S. Ct. 2797, 2826, 92 L.Ed.2d 85 (1986) (Powell, J. concurring in part and dissenting in part), *abrogated on other grounds by Rucho v. Common Cause*, 588 U.S. 684, 139 S. Ct. 2484, 204 L.Ed.2d 931 (2019)). Courts analyze racial gerrymandering challenges under a two-part burden-shifting framework.

First, a plaintiff bears the burden to prove that “race was the predominant factor motivating the legislature’s decision to place a significant number of voters within or without a particular district.” *Miller*, 515 U.S. at 916. This requires a plaintiff to show that “the legislature ‘subordinated’ other factors – compactness, respect for political subdivisions, partisan advantage, what have you – to ‘racial considerations.’” *Cooper v. Harris*, 581 U.S. 285, 291, 137 S. Ct. 1455, 1464, 197 L.Ed.2d 837 (2017) (citing *Miller*, 515 U.S. at 916). The plaintiff may make the requisite showing “either through circumstantial evidence of a district’s shape and demographics or more direct evidence going to legislative purpose, that race was the predominant factor motivating the legislature’s decision....” *Alabama Legislative Black Caucus v. Alabama*, 575 U.S. 254, 267, 135 S. Ct. 1257, 1267, 191 L.Ed.2d 314 (2015) (citing *Miller*, 515 U.S. at 916).

If Plaintiff meets the burden of showing race played the predominant factor in the design of a district, the district must then survive strict scrutiny. *Cooper*, 581 U.S. at 292. At this point, the burden of proof “shifts to the State to prove that its race-based sorting of voters serves a ‘compelling interest’ and is ‘narrowly tailored’ to that end.” *Cooper*, 581 U.S. at 285 (citing *Bethune-Hill*, 580 U.S. at 193). “Racial

gerrymandering, even for remedial purposes” is still subject to strict scrutiny. *Shaw I*, 509 U.S. at 657. Where the state seeks to draw a congressional district by race for remedial purposes under Section 2, the state must have a “strong basis in evidence” for “finding that the threshold conditions for section 2 liability are present” under *Gingles*. And, to survive strict scrutiny, “the district drawn in order to satisfy § 2 must not subordinate traditional districting principles to race substantially more than is ‘reasonably necessary’ to avoid § 2 liability.” *Bush v. Vera*, 517 U.S. 952, 979, 116 S. Ct. 1941, 1961, 135 L.Ed.2d 248 (1996).

#### IV. FINDINGS OF FACT AND CONCLUSIONS OF LAW

##### A. Racial Predominance

The Court first addresses whether Plaintiffs have met their burden of showing that race predominated in drawing District 6. Racial *awareness* in redistricting does not necessarily mean that race *predominated* in the Legislature’s decision to create a second majority-minority district. *Shaw I*, 509 U.S. at 646. When redistricting, a legislature may be aware of race when it draws district lines, just as it is aware of other demographic information such as age, economic status, religion, and political affiliation. *Shaw I*, 509 U.S. at 646. Race consciousness, on its own, does not make a district an unconstitutional racial gerrymander or an act of impermissible race discrimination. *Id.* But while districts may be drawn for remedial purposes, Section 2 of the Voting Rights “never require[s] adoption of districts that violate traditional redistricting principles.” *Allen v. Milligan*, 599 U.S. 1, 29 – 30, 143 S. Ct. 1487, 1492, 216 L.Ed.2d 60 (2023) (internal citations omitted). Indeed, to survive strict scrutiny,

“the district drawn in order to satisfy § 2 must not subordinate traditional districting principles to race substantially more than is ‘reasonably necessary’ to avoid § 2 liability.” *Vera*, 517 U.S. at 979. As discussed above, racial predominance may be shown through either circumstantial evidence, direct evidence, or both. *Ala. Legis. Black Caucus*, 135 S. Ct. at 1267.

Here, the *Robinson* Intervenors and the State argue that political considerations predominated in drawing the boundaries of District 6. They argue that the State had to create a second majority-minority district based on the district court’s ruling in the *Robinson* litigation and that District 6 was drawn with the primary purpose of protecting key Republican incumbents, such as Speaker Mike Johnson, Majority Leader Steve Scalise, and Representative Julia Letlow. It is clear from the record and undisputed that political considerations – the protection of incumbents – played a role in how District 6 was drawn. Plaintiffs, however, contend that considerations of race played a qualitatively greater role in how the State drew the contours of District 6 than these political considerations.

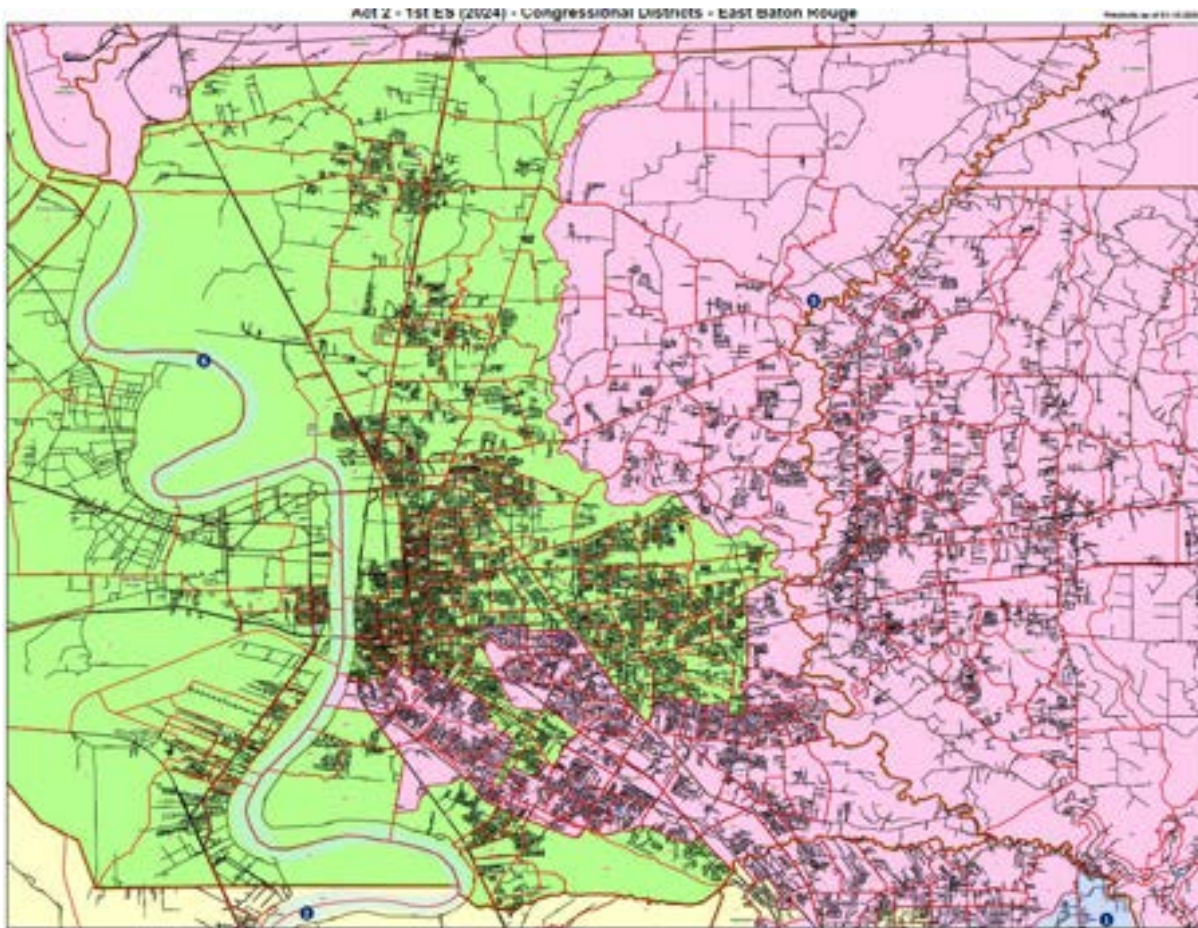
### **1. Circumstantial Evidence**

In the redistricting realm, appearances matter. A district’s shape can provide circumstantial evidence of a racial gerrymander. *Shaw I*, 509 U.S. at 647. In the past, the Supreme Court has relied on irregular district shapes and demographic data to find racial gerrymandering.<sup>9</sup> *See Shaw v. Hunt*, 517 U.S. 899, 910-16 (1996) (“*Shaw II*”); *Miller*, 515 U.S. 900; *Vera*, 517 U.S. 952.

---

<sup>9</sup> Significantly, “[s]hape is relevant not because bizarreness is a necessary element of the constitutional wrong or a threshold requirement of proof, but because it may be

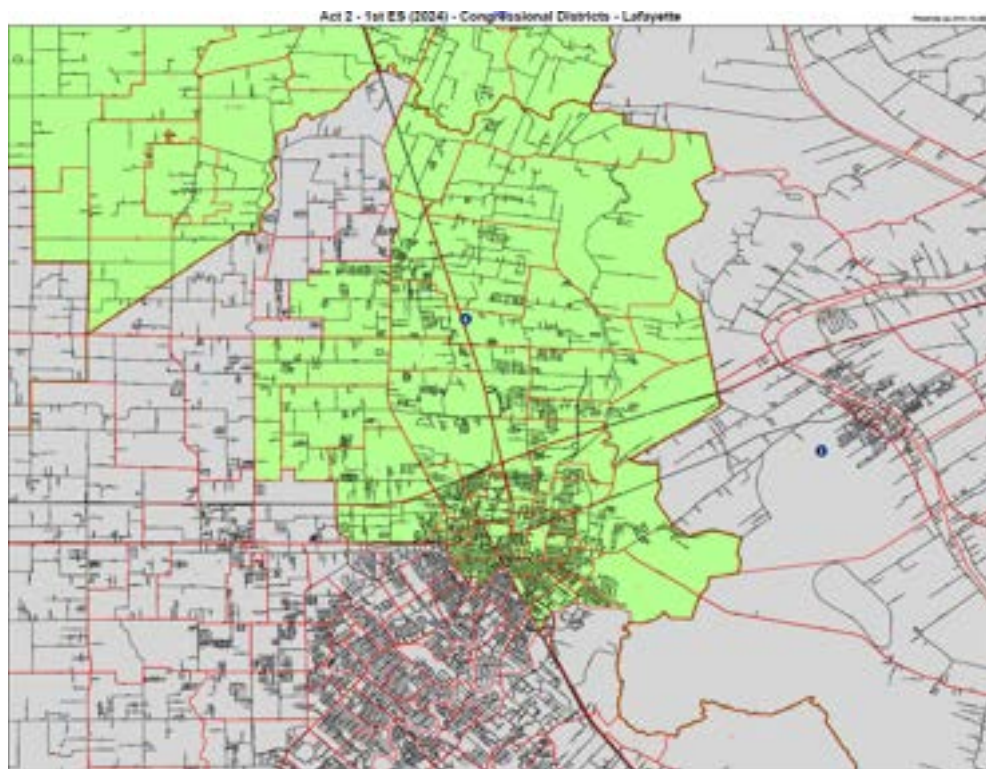
Here, as described by Dr. Voss, District 6 “slashes’ across the state of Louisiana” and includes portions of four disparate metropolitan areas. But – critical to our analysis – District 6 only encompasses the parts of those cities that are inhabited by majority-Black voting populations, while excluding neighboring non-minority voting populations. Tr., Vol. I, 93:25; 94:1-5; 94:18-95:10; 96:7-16; PE3; PE4. His description encapsulates what the following maps show on their face:



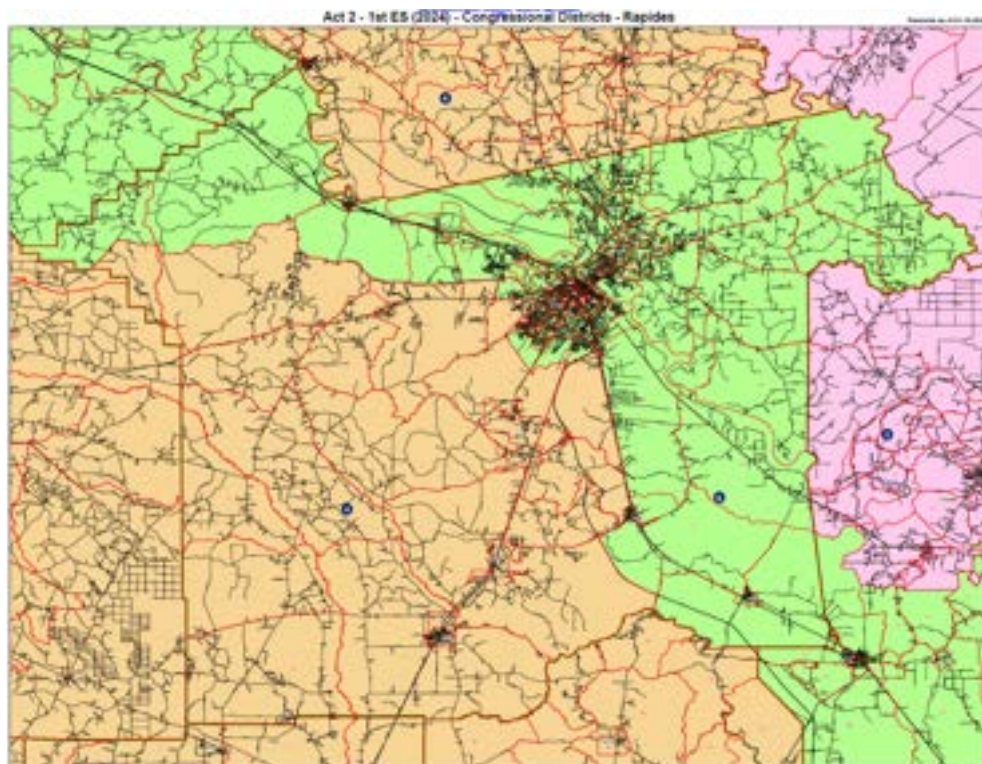
Baton Rouge Close Up of 2024 Enacted Map (JE17).

---

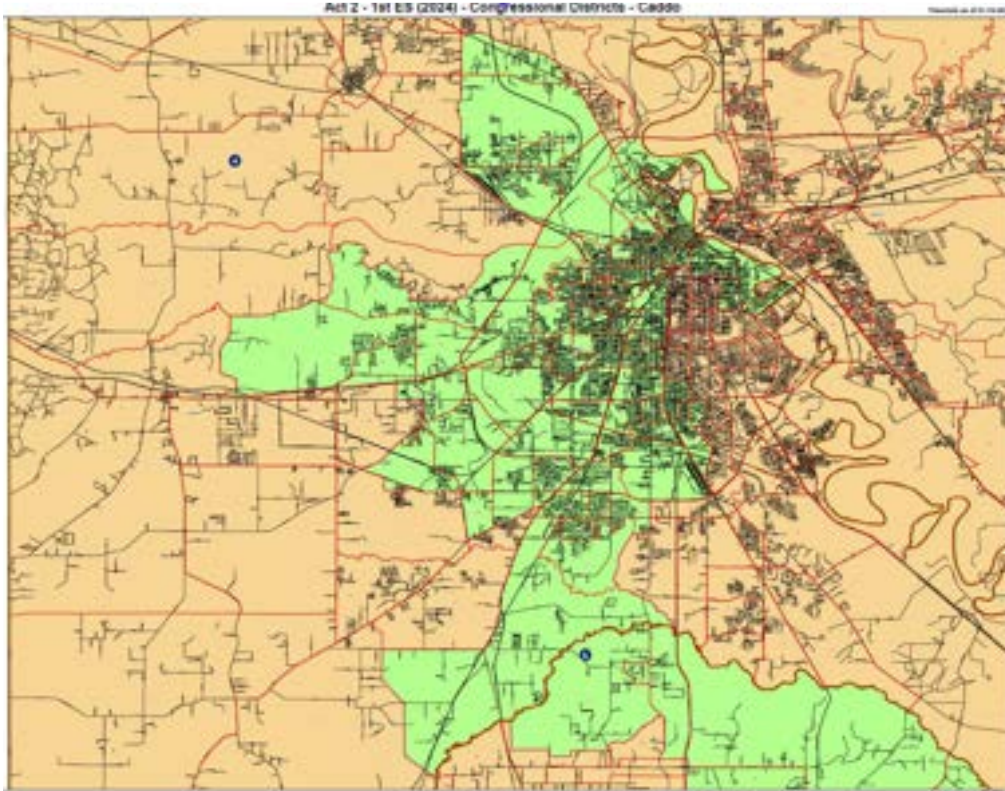
persuasive circumstantial evidence that race for its own sake, and not other districting principles, was the legislature's dominant and controlling rationale in drawing its district lines.” *Miller*, 515 U.S. at 912-913; *See Shaw v. Hunt*, 861 F. Supp. 408, 431 (E.D.N.C. 1994); *Hays I*; but see *DeWitt v. Wilson*, 856 F. Supp. 1409, 1413 (E.D. Cal.1994). Thus, a district's bizarre shape is not the only type of circumstantial evidence on which parties may rely. *Id.*



Lafayette Close Up of 2024 Enacted Map (JE17).



Alexandria Close Up of 2024 Enacted Map (JE17).



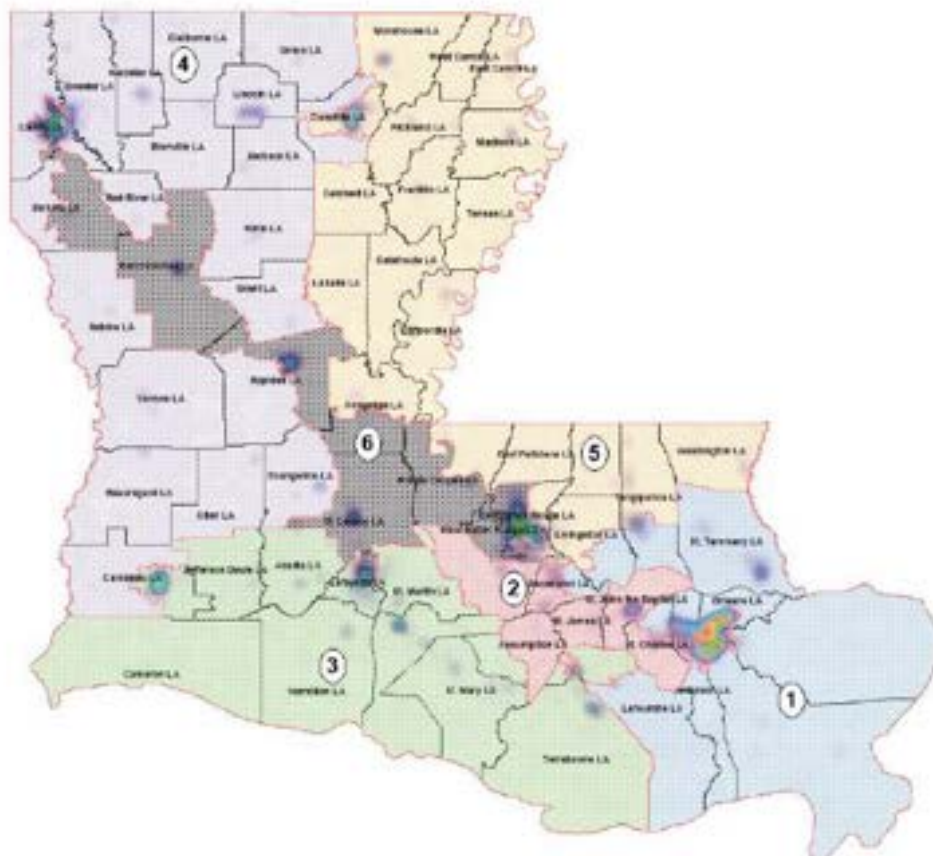
Shreveport Close Up of 2024 Enacted Map (JE17).

Like *Shaw II* and *Vera*, this case presents evidence of “mixed motives” in creating District 6 – motives based on race and political considerations. Unlike a single motive case, any circumstantial evidence tending to show neglect of traditional districting principles, such as compactness and respect for parish lines, caused District 6’s bizarre shape could seemingly arise from a “political motivation as well as a racial one.” *Cooper v. Harris*, 581 U.S. at 308 (citing *Hunt v. Cromartie*, 526 U.S. 541, 547 n.3, 119 S. Ct. 1545, 1549, 143 L.Ed.2d 731 (1999)). In mixed motive cases such as this one, the Supreme Court has noted that “political and racial reasons are capable of yielding similar oddities in a district’s boundaries.” *Id.* Accordingly, this Court faces “a formidable task: It must make ‘a sensitive inquiry’ into all ‘circumstantial and direct evidence of intent’ to assess whether the plaintiffs have

managed to disentangle race from politics and prove that the former drove a district’s lines.” *Id.*

Turning to the record, Mr. Hefner’s “heat map” is particularly helpful as circumstantial evidence of the motives driving the decisions as to where to draw the boundaries of District 6. The “heat map” shows that outside of the New Orleans and East Baton Rouge areas, the state’s Black population is highly dispersed across the state. Tr., Vol. II 281:4-15. Mr. Hefner opined that District 6 was designed as such to collect these highly dispersed BVAP areas in order to create a second majority-minority district. *Id.*, 283:15-285:1.

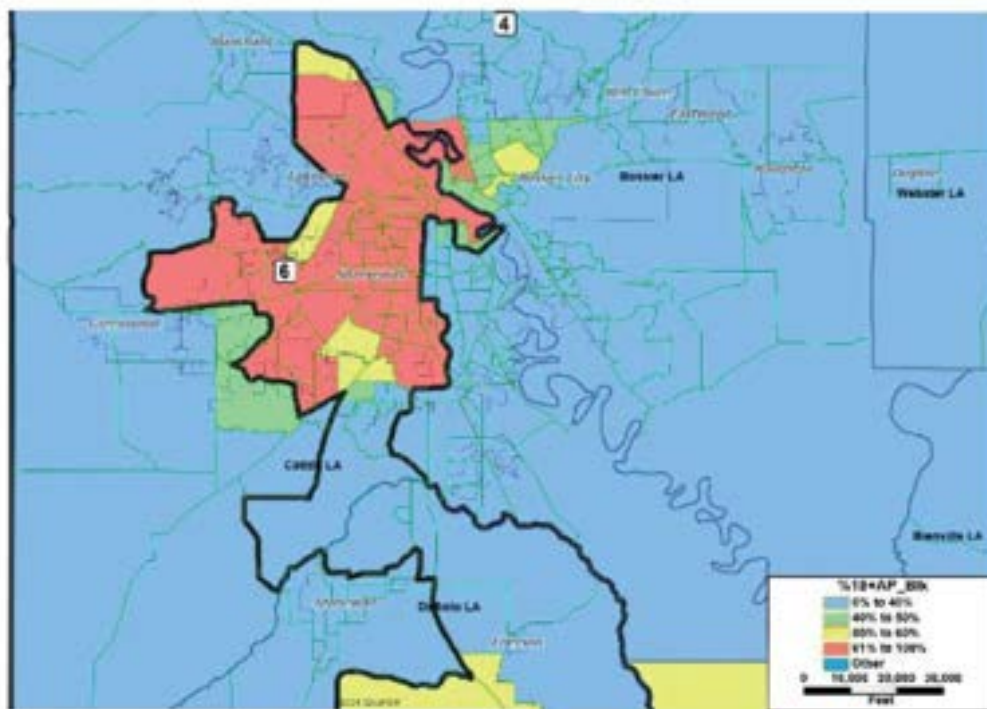
**Map 15 – SB 8 Plan with African American Populations**



PE 16.

When Mr. Hefner’s heat map is superimposed on SB8, the “story of racial gerrymandering” becomes evident. *See Miller*, 515 U.S. at 917 (“... when [the district’s] shape is considered in conjunction with its racial and population densities, the story of racial gerrymandering ... becomes much clearer”). That exhibit shows that District 6 sweeps across the state to include the heavily concentrated Black population neighborhoods in East Baton Rouge, Alexandria, Opelousas, Natchitoches, and Mansfield. Most telling, District 6 juts up at its northern end to carve out the Black neighborhoods of Shreveport and separates those neighborhoods from the majority white neighborhoods of Shreveport and Bossier City (“Shreveport-Bossier”). Tr., Vol. II, 283:15-285:1.

Map 21 – Shreveport Area in Caddo Parish



PE 18.

District 6 also dips down from its northwest trajectory and splits the majority of Black neighborhoods of Lafayette from the rest of the city and parish. Specifically, District 6 includes Lafayette's northeast neighborhoods, which contain a predominantly Black population, while leaving the rest of the city and parish in neighboring District 3. *Id.* at 283:22-284:4. In sum, the "heat maps" and demographic data in evidence tell the true story – that race was the predominate factor driving decisions made by the State in drawing the contours of District 6. This evidence shows that the unusual shape of the district reflects an effort to incorporate as much of the dispersed Black population as was necessary to create a majority-Black district.

## **2. Direct Evidence**

The Court next looks to the direct evidence of the Legislature's motive in creating District 6 – in other words, what was actually said by the individuals who had a hand in promulgating, drafting, and voting on SB8. The direct evidence buttresses the Court's conclusion that race was the predominant factor the legislators relied upon in drawing District 6.

The record includes audio and video recordings, as well as transcripts, of statements made by key political figures such as the Governor of Louisiana, the Louisiana Attorney General, and Louisiana legislators, all of whom expressed that the primary purpose guiding SB8 was to create a second majority-Black district due to the *Robinson* litigation. As discussed *supra*, the Middle District, after the preliminary injunction hearing in *Robinson*, found a likelihood of success on the merits of the *Robinson* Plaintiffs' claim that a second majority-minority district was required by Section 2 of the Voting Rights. Although the preliminary injunction was

vacated by the Fifth Circuit to allow the Legislature to enact a new map, legislators chose to draw a map with a second majority-Black district in order to avoid a trial on the merits in the *Robinson* litigation. See, e.g., Tr. Vol. III, 588:11-17 (“Judge Dick has put us in a position and the Fifth Circuit, the panel that reviewed that decision, and the whole court, when I asked them to go *en banc*, by declining to go on *en banc*, have put us in a position pus [sic] of where we are today where we need to draw a map.”); JE28, 46:5-101 (same); see also Tr. Vol. III, 589:1-3 (“The courts, never the less, have told us to draw a new map. And they have indicated that we have a deadline to do that or Judge Dick will draw the map for us.”); JE28 at 36:14-17 (same); JE36 at 33 (Senator Price: “Regardless of what you heard, we are on a court order and we need to move forward. We would not be here if we were not under a court order to get this done.”); JE36 at 1 (Senator Fields: “[B]oth the district and the appeals court have said we need to do something before the next congressional elections.”); JE31, 26:12–24 (Chairman Beaulieu: “Senator Womack, why are we here today? What – what brought us all to this special session as it – as it relates to, you know, what we’re discussing here today?”); Senator Womack: “The middle courts of the district courts brought us here from the Middle District, and said, ‘Draw a map, or I’ll draw a map.’”; Chairman Beaulieu: “Okay.”; Senator Womack: “So that’s what we’ve done.”; Chairman Beaulieu: “And – and were you – does – does this map achieve that middle court’s orders?”; Senator Womack: “It does.”); PE41, 75:24-76:2 (Representative Lyons, Chairman of the House and Governmental Affairs Committee, stating “[T]he mission we have here is that we have to create two majority-Black districts.”); PE41, 121:19–22 (Senator Womack stating that “... we all know why we’re here. We were

ordered to – to draw a new Black district, and that’s what I’ve done.”); PE41, 9:3-8 (Representative Amedee: “Is this bill intended to create another black district?” Representative Beaulieu: “Yes, ma’am, and to comply with the judge’s order.”); JE31, 97:17-19, 21-24 (Representative Carlson: “the overarching argument that I’ve heard from nearly everyone over the last four days has been race first ... race seems to be, at least based on the conversations, the driving force...”). SB 8’s sponsor, Senator Womack, also explicitly admitted that creating two majority-Black districts was “the reason why District 2 is drawn around the Orleans Parish and why District 6 includes the Black population of East Baton Rouge Parish and travels up the I-49 corridor to include Black population in Shreveport.” PE41 at 26.

The Court also acknowledges that the record includes evidence that race-neutral considerations factored into the Legislature’s decisions, such as the protection of incumbent representatives. *See* JE29 at 2-3 (Senator Womack discussing that SB8 protects Congresswoman Julia Letlow, U.S. Speaker of the House Mike Johnson, and U.S. House Majority Leader Steve Scalise); Tr. Vol. I, 71:11-18, 79:1-4 (Senator Pressley testifying that “[w]e certainly wanted to protect Speaker Johnson ... We wanted to make sure that we protected Steve Scalise. Julia Letlow is on Appropriations. That was also very important that we try to keep her seat as well.”); *Id.* at 60:8-61:15 (Senator Seabaugh testifying that the fact that the Speaker and Majority Leader are from Louisiana is “kind of a big deal” and that protecting Speaker

Johnson, Majority Leader Scalise, and Representative Letlow was “an important consideration when drawing a congressional map.”).<sup>10</sup>

However, considering the circumstantial and the direct evidence of motive in the creation of District 6, the Court finds that “racially motivated gerrymandering had a qualitatively greater influence on the drawing of the district lines than politically motivated gerrymandering.” *Vera*, 517 U.S. at 953. As in *Shaw II* and *Vera*, the State first made the decision to create a majority-Black district and, only then, did political considerations factor into the State’s creation of District 6. The predominate role of race in the State’s decisions is reflected in the statements of legislative decision-makers, the division of cities and parishes along racial lines, the unusual shape of the district, and the evidence that the contours of the district were drawn to absorb sufficient numbers of Black-majority neighborhoods to achieve the goal of a functioning majority-Black district. If the State’s primary goal was to protect congressional incumbents, the evidence in the record does not show that District 6 in its current form was the only way to achieve that objective. As explained by the Supreme Court:

---

<sup>10</sup> At bottom, it is not credible that Louisiana’s majority-Republican Legislature would choose to draw a map that eliminated a Republican-performing district for predominantly political purposes. The Defendants highlight the purported animosity between Governor Jeff Landry and Representative Garrett Graves to support their contention that political considerations served as the predominant motivating factor behind SB8. However, given the slim majority Republicans hold in the United States House of Representatives, even if such personal or intra-party animosity did or does exist, it is difficult to fathom that Louisiana Republicans would intentionally concede a seat to a Democratic candidate on those bases. Rather, the Court finds that District 6 was drawn primarily to create a second majority-Black district that they predicted would be ordered in the Robinson litigation after a trial on the merits. Thus, it is clear that race was the driving force and predominant factor behind the creation of District 6.

One, often highly persuasive way to disprove a States contention that politics drove a district's lines is to show that the legislature had the capacity to accomplish all its partisan goals without moving so many members of a minority group into the district. If you were really sorting by political behavior instead of skin color (so the argument goes) you would have done – or, at least, could just as well have done – this. Such would-have, could-have, and (to round out the set) should-have arguments are a familiar means of undermining a claim that an action was based on a permissible, rather than a prohibited, ground.

*Cooper*, 581 U.S. at 317. In the present case, the record reflects that the State could have achieved its political goals in ways other than by carving up and sorting by race the citizens of Baton Rouge, Lafayette, Alexandria, and Shreveport. Put another way, the Legislature's decision to increase the BVAP of District 6 to over 50 percent was not required to protect incumbents and supports the Plaintiffs' contention that race was the predominate factor in drawing the district's boundaries. In sum, Plaintiffs have met their initial burden, and the burden now shifts to the State to prove that District 6 survives strict scrutiny.

## **B. Strict Scrutiny**

When a Plaintiff succeeds in proving racial predominance, the burden shifts to the State to “demonstrate that its districting legislation [was] narrowly tailored to achieve a compelling interest.” *Bethune-Hill*, 580 U.S. at 193 (citing *Miller*, 515 U.S. at 920).

### **1. Compelling State Interest**

The State argues that compliance with Section 2 of the Voting Rights Act is a compelling state interest. The Supreme Court has repeatedly assumed without deciding that compliance with the Voting Rights Act is a compelling interest. *See Shaw II*, 517 U.S. at 915; *Cooper*, 581 U.S. at 292; *Bethune-Hill*, 580 U.S. at 193. To

show that the districting legislation satisfies the “narrow tailoring” requirement “the state must establish that it had ‘good reasons’ to think that it would transgress the act if it did not draw race-based district lines.” This “strong basis (or ‘good reasons’) standard” provides “breathing room” to the State “to adopt *reasonable* compliance measures that may prove, in perfect hindsight not to have been needed.” *Cooper*, 581 U.S. at 293 (quoting *Bethune–Hill*, 581 U.S. at 293) (emphasis added). Moreover, the Supreme Court has often remarked that “redistricting is primarily the duty and responsibility of the State,” not of the courts. *Abbott v. Perez*, 585 U.S. 579, 603, 138 S. Ct. 2305, 2324, 201 L.Ed.2d 714 (2018) (citing *Miller*, 515 U.S. at 915).

Turning to the present case, the State argues that it had a “strong basis” in evidence to believe that the district court for the Middle District was likely, after a trial on the merits in *Robinson*, to rule that Louisiana’s congressional map violated Section 2 of the Voting Rights Act and order the creation of a second majority-Black district. *See Robinson* Appeal Ruling at 583 (vacating the district court’s preliminary injunction and granting the Legislature the opportunity to draw a new map instead of advancing to a trial on the merits of HB1); *See also Robinson* Docket, [Doc. 315] (“If the Defendant/Intervenors fail to produce a new enacted map on or before [January 30, 2024], this matter will proceed to a trial on the merits on [February 5, 2024], which shall continue daily until complete”); *see, e.g.*, JE36 at 4 (Senator Price: “We all know that we’ve been ordered by the court that we draw congressional districts with two minority districts. This map will comply with the order of both the Fifth Circuit Court of Appeals and the district court. They have said that the Legislature must pass a map that has two majority black districts.”); JE33, 5:1-7

(Representative Beaulieu: “As Senator Stine said earlier in this week, ‘It’s with a heavy heart that I present to you this other map,’ but we have to. It’s that clear. A federal judge has ordered us to draw an additional minority seat in the State of Louisiana.”); JE34, 11:3–7 (Senator Carter: “[W]e came together in an effort to comply with a federal judge’s order that Louisiana provide equal representation to the African Americans in the State of Louisiana, and we have an opportunity to do that.”); JE36 at 18 (Representative Marcelle: “Let’s not let Judge Dick have to do what our job is, which is to create a second minority-majority district.”); JE30, 20:22–21:4 (Senator Duplessis: “It’s about a federal law called the Voting Rights Act that has not been interpreted just by one judge in the Middle District of Louisiana who was appointed by former president Barack Obama, but also a U.S. Fifth Circuit Court of Appeals that’s made up of judges that were appointed by predominantly Republican presidents, and a United States Supreme Court that has already made rulings.”); Tr. Vol. I, 47:22-48:1 (Senator Seabaugh: “Well, the – really, the only reason we were there was because of the other litigation; and Judge Dick saying that she – if we didn’t draw the second minority district, she was going to. I think that’s the only reason we were there.”); Tr. Vol. I, 69:24-70:4 (Senator Pressly: “We were told that we had to have two performing African American districts. And that we were – that that was the main tenet that we needed to look at and ensure that we were able to draw the court – draw the maps; otherwise, the Court was going to draw the maps for us”).

The Court assumes, without deciding, that compliance with Section 2 was a compelling interest for the State to attempt to create a second majority-Black district in the present case. However, even assuming that the Voting Rights Act is a

compelling state interest in this case, that compelling interest does not support the creation of a district that does not comply with the factors set forth in *Gingles* or traditional districting principles. *See e.g., Shaw II*, 517 U.S. at 915 (“We assume, arguendo, for the purpose of resolving this suit, that compliance with Section 2 could be a compelling interest” but hold that the remedy is not narrowly tailored to the asserted end); *Vera*, 517 U.S. at 977 (plurality opinion) (“[W]e assume without deciding that compliance with [the Voting Rights Act], as interpreted by our precedents, can be a compelling state interest” but hold that the districts at issue are not “narrowly tailored” to achieve that interest (citation omitted)); *Ala. Legis. Black Caucus*, 575 U.S. at 279 (“[W]e do not here decide whether ... continued compliance with § 5 [of the Voting Rights Act] remains a compelling interest” because “we conclude that the District Court and the legislature asked the wrong question with respect to narrow tailoring.”).

Indeed, the Supreme Court has made clear that, in the context of a constitutional challenge to a districting scheme, “unless each of the three *Gingles* prerequisites is established, “ ‘there neither has been a wrong nor can be a remedy’” and the districting scheme does not pass muster under strict scrutiny. *Cooper v. Harris*, 581 U.S. at 306 (quoting *Grove v. Emison*, 507 U.S. 25, 41, 113 S. Ct. 1075, 1084, 122 L.Ed.2d 388 (1993)). With respect to traditional districting requirements, the Supreme Court has consistently warned that, “§ 2 never require[s] adoption of districts that violate traditional redistricting principles. Its exacting requirements, instead, limit judicial intervention to ‘those instances of intensive racial politics’ where the ‘excessive role [of race] in the electoral process ... den[ies] minority voters

equal opportunity to participate.” *Allen v. Milligan*, 599 U.S. at 29–30 (internal citations omitted).<sup>11</sup> Accordingly, whether District 6, as drawn, is “narrowly tailored” requires the Court to address the *Gingles* factors as well as traditional districting criteria.

**a. Consideration of the *Gingles* Factors**

The Supreme Court in *Gingles* set out how courts must evaluate claims alleging a Section 2 violation of the Voting Rights Act. *Gingles* involved a challenge to North Carolina’s districting scheme, which purportedly diluted the vote of its Black citizens. *Gingles*, 478 U.S. at 34–36.

*Gingles* emphasized precisely what Section 2 guards against. “The essence of a § 2 claim,” the Court explained, “is that a certain electoral law, practice, or structure interacts with social and historical conditions to cause an inequality in the opportunities enjoyed by black and white voters.” *Id.* at 47. This inequality occurs where an “electoral structure operates to minimize or cancel out” minority voters’ “ability to elect their preferred candidates.” *Id.* at 48. This risk is greatest “where minority and majority voters consistently prefer different candidates” and where minority voters are submerged in a majority voting population that “regularly defeat[s]” their choices. *Ibid.*

---

<sup>11</sup> The concern that Section 2 may impermissibly elevate race in the allocation of political power within the states is, of course, not new. *See, e.g., Shaw I*, 509 U.S. at 657 (“Racial gerrymandering, even for remedial purposes, may balkanize us into competing racial factions; it threatens to carry us further from the goal of a political system in which race no longer matters.”); *Allen v. Milligan*, 599 U.S. at 41–42. To ensure that *Gingles* does not improperly morph into a proportionality mandate, courts must rigorously apply the “geographically compact” and “reasonably configured” requirements. *Id.* at 44 (Kavanaugh concurrence, n. 2).

But Section 2 of the Voting Rights Act explicitly states that, “nothing in this section establishes a right to have members of a protected class elected in numbers equal to their proportion in the population.” 52 U.S.C. § 10301. And the Supreme Court has repeatedly admonished that *Gingles* does not mandate a proportional number of majority-minority districts. Indeed, “[i]f *Gingles* demanded a proportional number of majority-minority districts, States would be forced to group together geographically dispersed minority voters into unusually shaped districts, without concern for traditional districting criteria such as county, city, and town lines. But *Gingles* and this Court’s later decisions have flatly rejected that approach.” *Allen v. Milligan*, 599 U.S. at 43–44 (Kavanaugh concurring) (citing *Abbott*, 585 U.S. at 615; *Vera*, 517 U.S. at 979; *Gingles*, 478 U.S. at 50; *Miller*, 515 U.S. at 917–920; and *Shaw I*, 509 U.S. at 644–649).

Instead, *Gingles* requires the creation of a majority-minority district only when, among other things: (i) a State’s redistricting map cracks or packs a large and “geographically compact” minority population and (ii) a plaintiff’s proposed alternative map and proposed majority-minority district are “reasonably configured” – namely, by respecting compactness principles and other traditional districting criteria such as county, city, and town lines. *Allen v. Milligan*, 599 U.S. at 43 (Kavanaugh concurring) (citing *Cooper*, 581 U.S. at 301–302; *Voinovich v. Quilter*, 507 U.S. 146, 153–154, 113 S. Ct. 1149, 122 L.Ed.2d 500 (1993)).

In order to succeed in proving a Section 2 violation under *Gingles*, Plaintiffs must satisfy three specific “preconditions.” *Gingles*, 478 U.S. at 50. First, the “minority group must be sufficiently large and [geographically] compact to constitute

a majority in a reasonably configured district.” *Wisconsin Legislature v. Wisconsin Elections Comm’n*, 595 U.S. 398, 402, 142 S. Ct. 1245, 1248, 212 L.Ed.2d 251 (2022) (per curiam) (citing *Gingles*, 478 U.S. at 46–51). Case law explains that a district will be reasonably configured if it comports with traditional districting criteria, such as being contiguous and reasonably compact. *See Ala. Legis. Black Caucus*, 575 U.S. at 272. “Second, the minority group must be able to show that it is politically cohesive.” *Gingles*, 478 U.S. at 51. Third, “the minority must be able to demonstrate that the white majority votes sufficiently as a bloc to enable it ... to defeat the minority’s preferred candidate.” *Ibid.* Finally, a plaintiff who demonstrates the three preconditions must also show, under the “totality of circumstances,” that the political process is not “equally open” to minority voters. *Id.* at 38-38 and 45-46 (identifying several factors relevant to the totality of circumstances inquiry, including “the extent of any history of official discrimination in the state ... that touched the right of the members of the minority group to register, to vote, or otherwise to participate in the democratic process.”).

Each of the three *Gingles* preconditions serves a different purpose. The first, which focused on geographical compactness and numerosity, is “needed to establish that the minority has the potential to elect a representative of its own choice in some [reasonably configured] single-member district.” *Grove*, 507 U.S. at 40. The second, which concerns the political cohesiveness of the minority group, shows that a representative of its choice would in fact be elected. *Ibid.* The third precondition, which focuses on racially polarized voting, “establish[es] that the challenged districting thwarts a distinctive minority vote” at least plausibly on account of race.

*Ibid.* Finally, the totality of circumstances inquiry recognizes that application of the *Gingles* factors is “peculiarly dependent upon the facts of each case.” 478 U.S. at 79. Before a court can find a violation of Section 2, therefore, they must conduct “an intensely local appraisal” of the electoral mechanism at issue, as well as “searching practical evaluation of the ‘past and present reality.’” *Ibid.*

In the present case, the State simply has not met its burden of showing that District 6 satisfies the first *Gingles* factor – that the “minority group [is] sufficiently large and [geographically] compact to constitute a majority in a reasonably configured district.” The record reflects that, outside of southeast Louisiana, the State’s Black population is dispersed. That required the State to draw District 6 as a “bizarre” 250-mile-long slash-shaped district that functions as a majority-minority district only because it severs and absorbs majority-minority neighborhoods from cities and parishes all the way from Baton Rouge to Shreveport. As discussed below, this fails to comport with traditional districting principles.

**b. Traditional Districting Principles**

The first *Gingles* factor requires that a minority population be “[geographically] compact to constitute a majority in a reasonably configured district.” *Allen v. Milligan*, 599 U.S. at 18 (quoting *Wisconsin*, 595 U.S. at 402). This requires consideration of traditional districting principles.

Traditional districting principles consist of six criteria that arose from case law. The first three are geographic in nature and are as follows: (1) compactness, (2) contiguity, and (3) preservation of parishes and respect for political subdivisions. *Shaw I*, 509 U.S. at 647. The Supreme Court has emphasized that “these criteria are

important not because they are constitutionally required – they are not, *cf. Gaffney v. Cummings*, 412 U.S. 735, 752, n. 18, 93 S. Ct. 2321, 2331, n. 18, 37 L.Ed.2d 298 (1973) – but because they are objective factors that may serve to defeat a claim that a district has been gerrymandered on racial lines.” *Id.* The other three include preservation of communities of interest, preservation of cores of prior districts, and protection of incumbents. *See Miller*, 515 U.S. at 916; *Karcher v. Daggett*, 462 U.S. 725, 740 (1983).

Joint Rule 21 – enacted by the Legislature in 2021 – contains criteria that must be satisfied by any redistricting plan created by the Legislature, separate and apart from compliance with the Voting Rights Act and Equal Protection Clause. JE2. Joint Rule 21 states, relevantly, that “each district within a redistricting plan ... shall contain whole election precincts as those are represented as Voting Districts (VTDs)” and “[i]f a VTD must be divided, it shall be divided into as few districts as possible.” *Id.* at (G)(1)-(2). Joint Rule 21 further requires the Legislature to “respect the established boundaries of parishes, municipalities, and other political subdivisions and natural geography of this state to the extent practicable.” *Id.* at (H). However, this requirement does not take precedence over the preservation of communities of interest and “shall not be used to undermine the maintenance of communities of interest within the same district to the extent practicable.” *Id.*

The Supreme Court case of *Miller v. Johnson* demonstrates how traditional districting criteria applies to a racial gerrymandering claim. 515 U.S. at 910–911. There, the Supreme Court upheld a district court’s finding that one of Georgia’s ten congressional districts was the product of an impermissible racial gerrymander. *Id.*

At the time, Georgia’s BVAP was 27 percent, but there was only one majority-minority district. *Id.* at 906. To comply with the Voting Rights Act, Georgia’s government thought it necessary to create two more majority-minority districts – thereby achieving proportionality. *Id.* at 920–921. But like North Carolina in *Shaw I*, Georgia could not create the districts without flouting traditional criteria. Instead, the unconstitutional district “centered around four discrete, widely spaced urban centers that ha[d] absolutely nothing to do with each other, and stretch[ed] the district hundreds of miles across rural counties and narrow swamp corridors.” *Miller*, 515 U.S. at 908. The Court called the district a geographic “monstrosity.” *Allen v. Milligan*, 599 U.S. at 27–28 (citing *Miller*, 515 U.S. at 909).

**c. Communities of Interest**

Perhaps more than any other state of its size, the State of Louisiana is fortunate to have a rich cultural heritage, including diverse ethnicities, customs, economic drivers, types of agriculture, and religious affiliations. While the Court is not bound by the decisions in the *Hays* litigation – made some thirty years ago and involving a different though similar map, and different Census numbers – much of the “local appraisal” analysis from *Hays I* remains relevant to an analysis of SB8. There, the *Hays* court concluded that the distinct and diverse economic interests encapsulated in the challenged district, namely

cotton and soybean plantations, centers of petrochemical production, urban manufacturing complexes, timberlands, sawmills and paper mills, river barge depots, and rice and sugarcane fields are strung together to form the eclectic and incoherent industrial base of District 4. These diverse segments of the State economy have little in common. Indeed, their interests more often conflict than harmonize.

*Hays I*, 839 F. Supp. at 1201. Though this was written 30 years ago, the same is true today. And like the predecessor districts drawn in *Hays*, it is readily apparent to anyone familiar with Louisiana history and culture that Congressional District 6 also

violates the traditional north-south ethno-religious division of the State. Along its circuitous route, this new district combines English–Scotch–Irish, mainline Protestants, traditional rural Black Protestants, South Louisiana Black Catholics, Continental French–Spanish–German Roman Catholics, sui generis Creoles, and thoroughly mixed polyglots, each from an historically discrete and distinctive region of Louisiana, as never heretofore so extensively agglomerated.

*Id.*

Indeed as succinctly stated by the *Hays* court, the differences between North Louisiana, Baton Rouge, and Acadiana in term of culture, economic drivers, types of agriculture, and religious affiliations are pronounced.<sup>12</sup> This is so well known that

---

<sup>12</sup> Among other strong cultural and ethnic groups divided by SB8, the French Acadian (“Cajun”) and Creole communities in Southwest Louisiana have a strong identity and a shared history of adversity. The Acadians, for their part, were expelled from Nova Scotia by the British and Anglo-Americans during the French and Indian War, and some settled into the southwestern parishes of Louisiana (“Acadiana”). See Carl A. Brasseaux, *The Founding of New Acadia: The Beginning of Acadian Life in Louisiana, 1765-1803* (Chapter 5) (Louisiana State University Press 1987). This historical event is well-known in Louisiana and referred to as *Le Grand Dérangement*. See William Faulker Rushton, *The Cajuns From Acadia to Louisiana* (Farrar Straus Giroux 1979). The Acadian refugees made their homes in the foreign swamps and bayous of southern Louisiana and from there, built a rich and persisting culture – marked by their distinct dialect of French, and their cuisine, music, folklore, and Catholic faith. See Brasseaux, *The Founding of New Acadia*.

In 1921, Louisiana’s Constitution eliminated any reference to the French language and instead required only English to be taught, used, and spoken in Louisiana schools, which detrimentally affected the continuation of Cajun French. Roger K. Ward, *The French Language in Louisiana Law and Legal Education: A Requiem*, 57 La. L. Rev. 1299 (1997). <https://digitalcommons.law.lsu.edu/cgi/viewcontent.cgi?article=5694&context=lalrev>.

Remarkably, after years of cultural suppression, the late 1960s/early 1970s witnessed collective activism to revive Cajun French and culture in the area. *Id.* at 1299; see also <https://www.nationalgeographic.com/culture/article/reviving-the-cajun-dialect>. Thankfully, Louisiana’s 1974 Constitution safeguarded efforts by Cajun cultural groups to “ensure [their] preservation and proliferation.” *Id.* at 1300. To this day, Acadiana celebrates its

any Louisiana politician seeking statewide office must first develop a strategy to bridge the regional cultural and religious differences in Louisiana.<sup>13</sup>

There is no doubt that District 6 divides some established communities of interest from one another while collecting parts of disparate communities of interest into one voting district. Among other things, District 6 in SB8 splits six of the ten parishes that it touches. As the Court succinctly states in *Hays*, “there is no more fundamental unit of societal organization in the history of Louisiana than the parish.” *Hays I*, 839 F. Supp. at 1200.

District 6 also divides the four largest cities and metropolitan areas in its path along clearly racial lines. Among these are three of the four largest cities in Louisiana — *i.e.*, Baton Rouge, Lafayette, and Shreveport. And the maps in the record are clear that the division of these communities is based predominantly on the location of majority-Black voting precincts. Indeed, SB8, just like the congressional districts in *Hays I*, “violates the boundaries of nearly all major municipalities in the State.” *Hays*

---

Francophone ties with festivals such as Festival International de Louisiane, which features Francophone musicians and artisans from around the world, and Festival Acadiens and Créoles, the largest Cajun and Creole festival in the world. Further, to preserve the language, organizations such as CODOFIL support the preservation of the French language in Louisiana, and on a smaller scale, many community members form “French tables” where only French is allowed to be spoken. The unique community of Acadiana, among many others in Louisiana, with a deep connection and awareness of its past, certainly constitutes a community of interest. Race predominating, SB8 fails to take into account Louisiana’s diverse cultural, religious, and social landscape in any meaningful way.

<sup>13</sup> Attempting to bridge the north-south religious divide, one of Louisiana’s most famous politicians, Huey Long, began his stump speech by claiming, that, “when I was a boy, I would get up at six o’clock in the morning on Sunday, and I would take my Catholic grandparents to mass. I would bring them home, and at ten o’clock I would hitch the old horse up again, and I would take my Baptist parents to church.” A colleague later said, “I didn’t know you had any Catholic grandparents.” To which he replied, “Don’t be a damned fool. We didn’t even have a horse.”

*I*, 839 F. Supp. at 1201. The law is crystal clear on this point. As the Supreme Court held in *Allen v. Milligan*, it is unlawful to “concentrate[] a dispersed minority population in a single district by disregarding traditional districting principles such as compactness, contiguity, and respect for political subdivisions,” reaffirming that “[a] reapportionment plan that includes in one district individuals who belong to the same race, but who are otherwise separated by geographical and political boundaries,” raises serious constitutional concerns. 599 U.S. at 27 (citing *Shaw I*, 509 U.S. at 647). Based upon the foregoing, the Court finds that SB8’s District 6 does not satisfy the “geographically compact” and “reasonably configured” *Gingles* requirement.

**d. Respect for Political Subdivisions and Natural Boundaries**

Nor does SB8 take into account natural boundaries such as the Atchafalaya Basin, the Mississippi River, or the Red River. Just as in *Miller*, District 6 of SB8 “centers around four discrete, widely spaced urban centers that have absolutely nothing to do with each other, and stretches the district hundreds of miles across rural counties and narrow swamp corridors.” 515 U.S. at 908; *Allen v. Milligan*, 599 U.S. at 27–28 (citing *Miller v. Johnson*). Specifically, District 6’s population centers around the widely-spaced urban centers of Shreveport, Alexandria, Lafayette, and Baton Rouge – each of which is an independent metropolitan area – and are connected to one another only by rural parishes having relatively low populations. Importantly, none of these four cities or the parishes in which they are located are, by themselves, large enough to require that they be divided to comply with the “one person, one vote”

requirement of the Fourteenth Amendment. *Reynolds v. Sims*, 377 U.S. 533, 566, 84 S. Ct. 1362, 1384, 12 L.Ed.2d 506 (1964).

**e. Compactness**

The record also includes statistical evidence showing that District 6 is not “compact” as required by traditional districting principles. Specifically, Dr. Voss testified that, based on three measures of compactness — (i) the Reock Score; (ii) the Polsby-Popper score; and (iii) the Know It When You See It (“KIWYSI”) score — the current form of District 6 in SB8 performs worse than the districts in either HB1 (the map that was enacted in 2022) or the map that HB1 replaced from the previous decade. Tr., Vol. I, 100:22-103:5; 104:25-105:4; PE7. Thus, SB8 does not produce compact maps when judged in comparison to other real-life congressional maps of Louisiana. Tr., Vol. I, 107:16-21. Dr. Voss also opined that SB8’s majority-Black districts were especially non-compact compared to other plans that also included two majority-minority districts. *Id.* at 106:17-24. According to Dr. Voss, SB8’s District 6 scored worse on the Polsby-Popper test than the second majority-Black districts in other proposed plans that created a second majority-Black district. *Id.* at 106:17-24.

In sum, District 6 does not satisfy the first *Gingles* precondition nor does it comply with traditional districting principles. Accordingly, SB8 and, more specifically, District 6 cannot withstand strict scrutiny. That being said, while the record is clear that Louisiana’s Black population has become more dispersed and integrated in the thirty years since the *Hays* litigation (and Louisiana now has only six rather than the seven Congressional districts it had at that time), this Court does not decide on the record before us whether it is feasible to create a second majority-

Black district in Louisiana that would comply with the Equal Protection Clause of the Fourteenth Amendment. However, we do emphasize that Section 2 of the Voting Rights Act never requires race to predominate in drawing Congressional districts at the sacrifice of traditional districting principles. *Allen v. Milligan*, 599 U.S. at 29–30 (internal citations omitted).

**V.**  
**REMEDIAL PHASE**

The Court will hold a status conference to discuss the remedial stage of this trial on May 6, 2024, at 10:30 a.m. CST.

**VI.**  
**CONCLUSION**

As our colleagues so elegantly stated in *Hays II*, the long struggle for civil rights and equal protection under the law that has taken place in Louisiana and throughout our country, includes:

countless towns across the South, at schools and lunch counters, at voter registrar’s offices. They stood there, black and white, certain in the knowledge that the Dream was coming; determined that no threat, no spittle, no blow, no gun, no noose, no law could separate us because of the color of our skin. To say now: “Separate!” “Divide!” “Segregate!” is to negate their sacrifice, mock their dream, deny that self-evident truth that all men are created equal and that no government may deny them the equal protection of its laws.

*Hays II* at 125. The Court agrees and finds that SB8 violates the Equal Protection Clause as an impermissible racial gerrymander.

In light of the foregoing, the Court GRANTS PLAINTIFFS’ REQUEST FOR INJUNCTIVE RELIEF. The State of Louisiana is prohibited from using SB8’s map of congressional districts for any election.

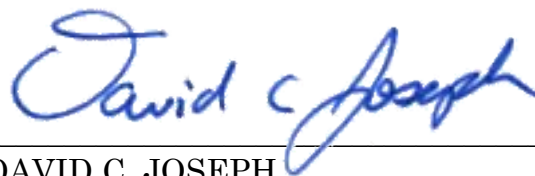
A status conference is hereby set on **May 6, 2024, at 10:30 a.m. CST** to discuss the remedial stage of this trial. Representatives for each party must attend.

THUS, DONE AND SIGNED on this 30<sup>th</sup> day of April 2024.



---

ROBERT R. SUMMERHAYS  
UNITED STATES DISTRICT JUDGE  
WESTERN DISTRICT OF LOUISIANA



---

DAVID C. JOSEPH  
UNITED STATES DISTRICT JUDGE  
WESTERN DISTRICT OF LOUISIANA